

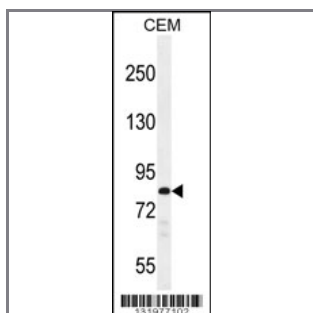
PCDHB3 Antibody (N-term)

Peptide Affinity Purified Rabbit Polyclonal Antibody (Pab)

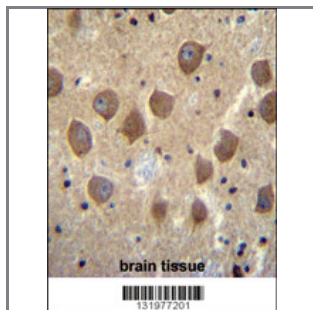
Catalog #	Applications:	Reactivity:	Accessions:
AP12159a	WB, IF, IHC, E	H	Q9Y5E6 , NP_061760.1
Concentration:	Size:	Isotype:	Clone Name:
0.25 mg/ml	0.1 mg	Rabbit Ig	RB31977

Application Data:

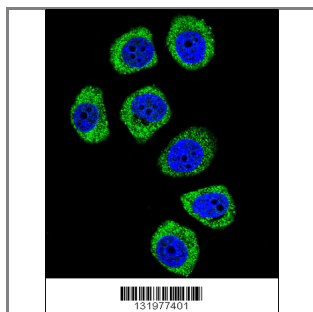
Calculated MW: 86773 Da



PCDHB3 Antibody (N-term) (Cat. #AP12159a) western blot analysis in CEM cell line lysates (35ug/lane). This demonstrates the PCDHB3 antibody detected the PCDHB3 protein (arrow).



PCDHB3 Antibody (N-term) (Cat. #AP12159a) immunohistochemistry analysis in formalin fixed and paraffin embedded human brain tissue followed by peroxidase conjugation of the secondary antibody and DAB staining. This data demonstrates the use of PCDHB3 Antibody (N-term) for immunohistochemistry. Clinical relevance has not been evaluated.



Confocal immunofluorescent analysis of PCDHB3 Antibody (N-term) (Cat#AP12159a) with U-251MG cell followed by Alexa Fluor 488-conjugated goat anti-rabbit IgG (green). DAPI was used to stain the cell nuclear (blue).

Gene ID:	Gene Symbol:
56132	PCDHB3

Other Names:

PCDHB3, Protocadherin beta-3,

Target/Specificity:

This PCDHB3 antibody is generated from rabbits immunized with a KLH conjugated synthetic peptide between 19-47 amino acids from the N-terminal region of human PCDHB3.

Application Notes:

The suggested dilution is:

ELISA 1:1,000

Western blotting 1:100~500

Immunohistochemistry 1:10~50

Immunofluorescence 1:10~50

Format:

Purified polyclonal antibody supplied in PBS with 0.09% (W/V) sodium azide. This antibody is purified through a protein A column, followed by peptide affinity purification.

Storage:

Maintain refrigerated at 2-8°C for up to 6 months. For long term storage store at -20°C in small aliquots to prevent freeze-thaw cycles.

Precautions:

PCDHB3 Antibody (N-term) is for research use only and not for use in diagnostic or therapeutic procedures.
