

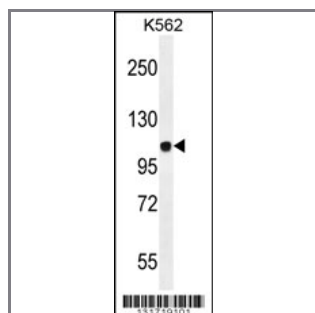
JAG1 Antibody (C-term)

Peptide Affinity Purified Rabbit Polyclonal Antibody (Pab)

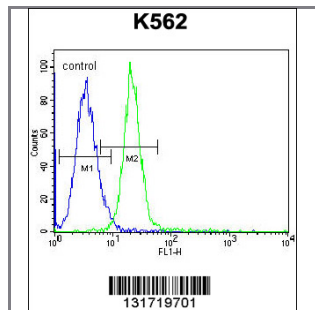
Catalog #	Applications:	Reactivity:	Accessions:
AP12146b	WB, FC, E	H	P78504 , NP_000205.1
Concentration:	Size:	Isotype:	Clone Name:
0.25 mg/ml	0.1 mg	Rabbit Ig	RB31719

Application Data:

Calculated MW: 133799 Da



JAG1 Antibody (C-term) (Cat. #AP12146b) western blot analysis in K562 cell line lysates (35ug/lane). This demonstrates the JAG1 antibody detected the JAG1 protein (arrow).



JAG1 Antibody (C-term) (Cat. #AP12146b) flow cytometric analysis of K562 cells (right histogram) compared to a negative control cell (left histogram). FITC-conjugated goat-anti-rabbit secondary antibodies were used for the analysis.

Gene ID:	Gene Symbol:
182	JAG1

Other Names:

JAG1, Protein jagged-1, JAGL1

Target/Specificity:

This JAG1 antibody is generated from rabbits immunized with a KLH conjugated synthetic peptide between 1129-1158 amino acids from the C-terminal region of human JAG1.

Application Notes:

The suggested dilution is:
ELISA 1:1,000

Western blotting 1:100~500

Flow cytometric 1:10~50

Format:

Purified polyclonal antibody supplied in PBS with 0.09% (W/V) sodium azide. This antibody is purified through a protein A column, followed by peptide affinity purification.

Storage:

Maintain refrigerated at 2-8°C for up to 6 months. For long term storage store at -20°C in small aliquots to prevent freeze-thaw cycles.

Precautions:

JAG1 Antibody (C-term) is for research use only and not for use in diagnostic or therapeutic procedures.
