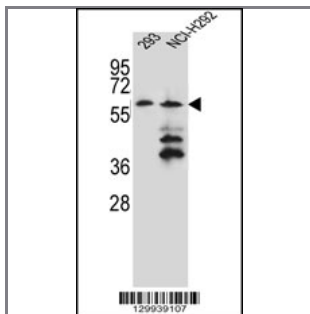


PRAMEF12 Antibody (Center)

Peptide Affinity Purified Rabbit Polyclonal Antibody (Pab)

Catalog #	Applications:	Reactivity:	Accessions:
AP12129c	WB, E	H	O95522 , NP_001074299.1
Concentration:	Size:	Isotype:	Clone Name:
0.25 mg/ml	0.1 mg	Rabbit Ig	RB29939

Application Data: Calculated MW: 54663 Da



PRAMEF12 Antibody (Center) (Cat. #AP12129c) western blot analysis in 293,NCI-H292 cell line lysates (35ug/lane).This demonstrates the PRAMEF12 antibody detected the PRAMEF12 protein (arrow).

Gene ID:	Gene Symbol:
390999	PRAMEF12

Other Names:

PRAMEF12,PRAME family member 12,

Target/Specificity:

This PRAMEF12 antibody is generated from rabbits immunized with a KLH conjugated synthetic peptide between 114-144 amino acids from the Central region of human PRAMEF12.

Application Notes:

The suggested dilution is:
ELISA 1:1,000
Western blotting 1:100~500

Format:

Purified polyclonal antibody supplied in PBS with 0.09% (W/V) sodium azide. This antibody is purified through a protein A column, followed by peptide affinity purification.

Storage:

Maintain refrigerated at 2-8°C for up to 6 months. For long term storage store at -20°C in small aliquots to prevent freeze-thaw cycles.

Precautions:

PRAMEF12 Antibody (Center) is for research use only and not for use in diagnostic or therapeutic procedures.
