

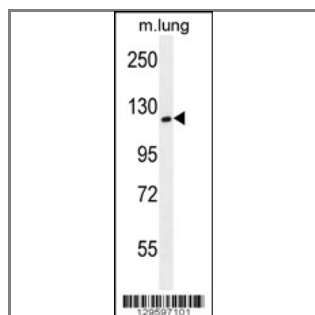
CYTSA Antibody (N-term)

Peptide Affinity Purified Rabbit Polyclonal Antibody (Pab)

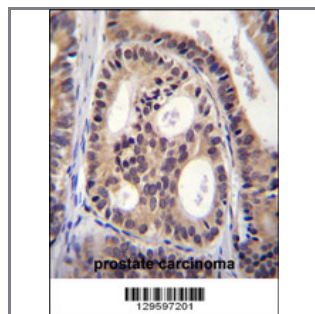
Catalog #	Applications:	Reactivity:	Accessions:
AP12106a	WB, IHC, E	H(predict), M	NP_001138940.1 , NP_056145.2 , Q69YQ0

Concentration:	Size:	Isotype:	Clone Name:
0.25 mg/ml	0.1 mg	Rabbit Ig	RB29597

Application Data: Calculated MW: 124602 Da



CYTSA Antibody (N-term) (Cat. #AP12106a) western blot analysis in mouse lung tissue lysates (35ug/lane). This demonstrates the CYTSA antibody detected the CYTSA protein (arrow).



CYTSA Antibody (N-term) (Cat. #AP12106a) immunohistochemistry analysis in formalin fixed and paraffin embedded human prostate carcinoma followed by peroxidase conjugation of the secondary antibody and DAB staining. This data demonstrates the use of CYTSA Antibody (N-term) for immunohistochemistry. Clinical relevance has not been evaluated.

Gene ID:	Gene Symbol:
23384	CYTSA

Other Names:

CYTSA, Cytospin-A, KIAA0376; SPECC1L

Target/Specificity:

This CYTSA antibody is generated from rabbits immunized with a KLH conjugated synthetic peptide between 115-144 amino acids from the N-terminal region of human CYTSA.

Application Notes:

The suggested dilution is:

ELISA 1:1,000

Western blotting 1:100~500

Immunohistochemistry 1:10~50

Format:

Purified polyclonal antibody supplied in PBS with 0.09% (W/V) sodium azide. This antibody is purified through a protein A column, followed by peptide affinity purification.

Storage:

Maintain refrigerated at 2-8°C for up to 6 months. For long term storage store at -20°C in small aliquots to prevent freeze-thaw cycles.

Precautions:

CYTSA Antibody (N-term) is for research use only and not for use in diagnostic or therapeutic procedures.
