

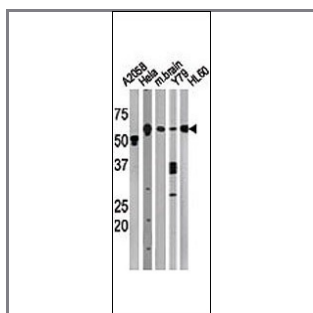
Beclin 1 Antibody

Purified Rabbit Polyclonal Antibody (Pab)

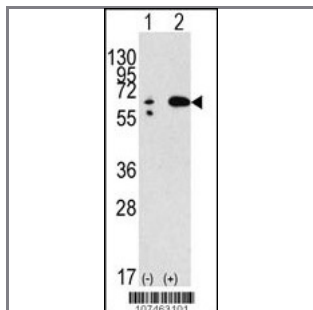
Catalog #	Applications:	Reactivity:	Accessions:
AP1818b	WB, IHC, FC, E	H, M	Q14457
Concentration:	Size:	Isotype:	Clone Name:
0.25 mg/ml	0.1 mg	Rabbit Ig	RB7463

Application Data:

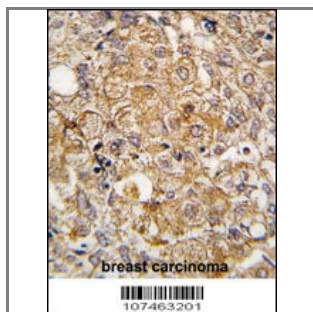
Calculated MW: 51896 Da



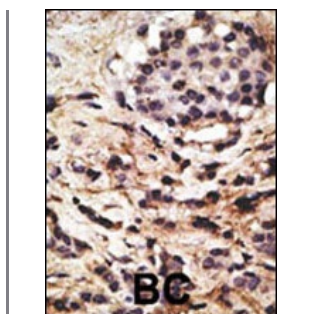
The anti-BECN1 Pab (Cat. #AP1818b) is used in Western blot to detect BECN1 in, from left to right, A2058, HeLa, mouse brain, Y79, and HL60 tissue lysates. BECN1(arrow) was detected using the purified Pab.



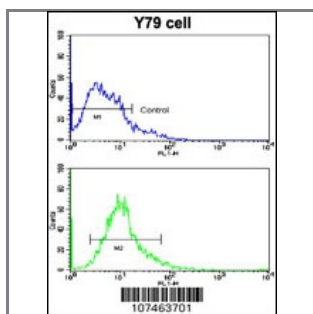
Western blot analysis of anti-hBECN1-E225 Pab (Cat. #AP1818b) in 293 cell line lysates transiently transfected with the BECN1 gene (2ug/lane). hBECN1-E225(arrow) was detected using the purified Pab (1:60 dilution).



Formalin-fixed and paraffin-embedded human breast carcinoma tissue reacted with Autophagy BECN1 (APG6) antibody (E225) (Cat.#AP1818b), which was peroxidase-conjugated to the secondary antibody, followed by DAB staining. This data demonstrates the use of this antibody for immunohistochemistry; clinical relevance has not been evaluated.



Formalin-fixed and paraffin-embedded human cancer tissue reacted with the primary antibody, which was peroxidase-conjugated to the secondary antibody, followed by DAB staining. This data demonstrates the use of this antibody for immunohistochemistry; clinical relevance has not been evaluated. BC = breast carcinoma; HC = hepatocarcinoma.



Flow cytometric analysis of Y79 cells using Beclin 1 (BECN1/APG6) Antibody (E225) (bottom histogram) compared to a negative control cell (top histogram). FITC-conjugated goat-anti-rabbit secondary antibodies were used for the analysis.

Gene ID:

8678

Gene Symbol:

BECN1

Other Names:

BECN1, ATG6, VPS30, beclin1, ATG6 autophagy related 6 homolog; beclin 1 (coiled-coil, moesin-like BCL2 interacting protein); beclin 1 (coiled-coil, moesin-like BCL2-interacting protein); beclin-1; coiled-coil myosin-like BCL2-interacting protein

Target/Specificity:

This Beclin 1 antibody is generated from rabbits immunized with a KLH conjugated synthetic peptide between 217~247 amino acids surrounding amino acid E225 of human BECN1.

Application Notes:

The suggested dilution is:

ELISA 1:1,000

Western blotting 1:100~500

Immunohistochemistry 1:50~100

Flow cytometric 1:10~50

Format:

Purified polyclonal antibody supplied in PBS with 0.09% (W/V) sodium azide. This antibody is purified through a protein G column, eluted with high and low pH buffers and neutralized immediately, followed by dialysis against PBS.

Storage:

Maintain refrigerated at 2-8°C for up to 6 months. For long term storage store at -20°C in small aliquots to prevent freeze-thaw cycles.

Precautions:

Beclin 1 Antibody is for research use only and not for use in diagnostic or therapeutic procedures.
