

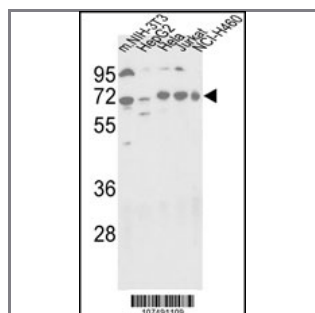
ATG16L Antibody (C-term)

Purified Rabbit Polyclonal Antibody (Pab)

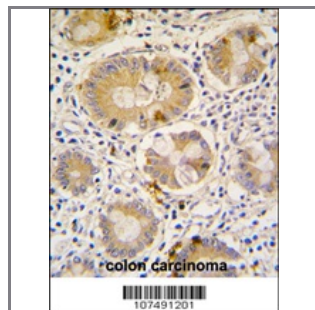
Catalog #	Applications:	Reactivity:	Accessions:
AP1817c	WB, IHC, E	H	Q676U5
Concentration:	Size:	Isotype:	Clone Name:
0.25 mg/ml	0.1 mg	Rabbit Ig	RB7491

Application Data:

Calculated MW: 68265 Da



Western blot analysis of hAPG16L-K366 (Cat.#AP1817c) in NIH-3T3, HepG2, Hela, Jurkat and NCI-H460 cell line lysates (35ug/lane). APG16L (arrow) was detected using the purified Pab.



Formalin-fixed and paraffin-embedded human colon carcinoma tissue reacted with Autophagy APG16L antibody (C-term), which was peroxidase-conjugated to the secondary antibody, followed by DAB staining. This data demonstrates the use of this antibody for immunohistochemistry; clinical relevance has not been evaluated.

Gene ID:	Gene Symbol:
55054	ATG16L1

Other Names:

hCG_1817841, APG16L, ATG16L, FLJ00045, FLJ10035, FLJ10828, FLJ22677, IBD10, WDR30, APG16 autophagy 16-like; APG16-like 1; APG16L beta; ATG16 autophagy related 16-like protein 1; WD repeat domain 30; autophagy-related protein 16-1

Target/Specificity:

This ATG16L antibody is generated from rabbits immunized with a KLH conjugated synthetic peptide between 377~407 amino acids from the C-term of human APG16L.

Application Notes:

The suggested dilution is:

ELISA 1:1,000

Western blotting 1:100~500

Immunohistochemistry 1:50~100

Format:

Purified polyclonal antibody supplied in PBS with 0.09% (W/V) sodium azide. This antibody is prepared by Saturated Ammonium Sulfate (SAS) precipitation followed by dialysis against PBS.

Storage:

Maintain refrigerated at 2-8°C for up to 6 months. For long term storage store at -20°C in small aliquots to prevent freeze-thaw cycles.

Precautions:

ATG16L Antibody (C-term) is for research use only and not for use in diagnostic or therapeutic procedures.
