

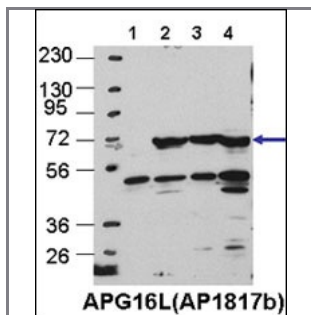
## ATG16L Antibody

### Purified Rabbit Polyclonal Antibody (Pab)

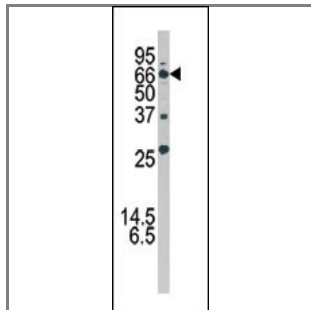
Catalog #	Applications:	Reactivity:	Accessions:
AP1817b	WB, IHC, E	H, M	<a href="#">Q676U5</a>
Concentration:	Size:	Isotype:	Clone Name:
0.25 mg/ml	0.1 mg	Rabbit Ig	RB7490

#### Application Data:

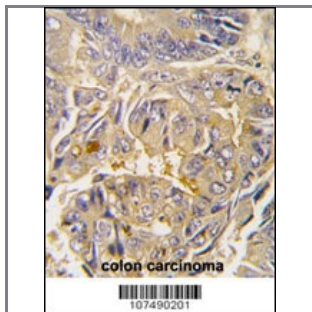
Calculated MW: 68265 Da



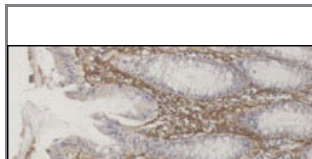
Cos7, HEK293, MEF, and Hela cells, left to right, respectively. Data courtesy of Drs. Jiefei Geng and Dan Klionsky, University of Michigan.



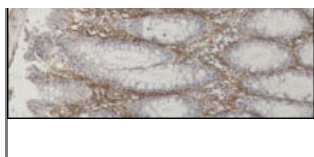
Western blot of APG16L (L92) Pab (Cat. #AP1817b) in mouse brain tissue lysate.



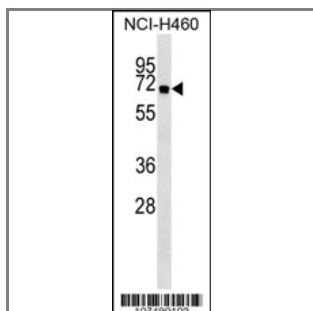
Formalin-fixed and paraffin-embedded human colon carcinoma tissue reacted with Autophagy APG16L antibody (L176), which was peroxidase-conjugated to the secondary antibody, followed by DAB staining. This data demonstrates the use of this antibody for immunohistochemistry; clinical relevance has not been evaluated.



Paraformaldehyde-fixed paraffin-embedded biopsy from patient with confirmed colonic Crohn disease. Slide subjected to a citrate-based antigen retrieval procedure, permeabilized by incubation with 0.1% Triton X-100 in 0.1M PBS) washed three times in PBS and blocked with 0.75% bovine serum albumin in PBS for 20 minutes. Sections subsequently



incubated with APG16L primary antibody at a 1:200 dilution in 0.75% BSA for 1 h RT. Data courtesy of J. Hampe, S. Schreiber, P. Rosenstiel et al., Institute for Clinical Molecular Biology and First Department of Medicine, Christian-Albrechts University Kiel, University Hospital Schleswig-Holstein, 24105 Kiel, Germany.



APG16L Antibody (Cat. #AP1817b) western blot analysis in NCI-H460 cell line lysates (35ug/lane). This demonstrates the APG16L antibody detected the APG16L protein (arrow).

---

**Gene ID:**

55054

**Gene Symbol:**

ATG16L1

---

**Other Names:**

hCG\_1817841, APG16L, ATG16L, FLJ00045, FLJ10035, FLJ10828, FLJ22677, IBD10, WDR30, APG16 autophagy 16-like; APG16-like 1; APG16L beta; ATG16 autophagy related 16-like protein 1; WD repeat domain 30; autophagy-related protein 16-1

---

**Target/Specificity:**

This ATG16L antibody is generated from rabbits immunized with a KLH conjugated synthetic peptide between 84~114 amino acids surrounding amino acid L92 of human APG16L.

---

**Application Notes:**

The suggested dilution is:

ELISA 1:1,000

Western blotting 1:100~500

Immunohistochemistry 1:50~100

---

**Format:**

Purified polyclonal antibody supplied in PBS with 0.09% (W/V) sodium azide. This antibody is prepared by Saturated Ammonium Sulfate (SAS) precipitation followed by dialysis against PBS.

---

**Storage:**

Maintain refrigerated at 2-8°C for up to 6 months. For long term storage store at -20°C in small aliquots to prevent freeze-thaw cycles.

---

**Precautions:**

ATG16L Antibody is for research use only and not for use in diagnostic or therapeutic procedures.

---