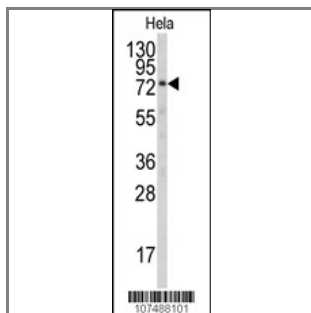


ATG16L Antibody (N-term)

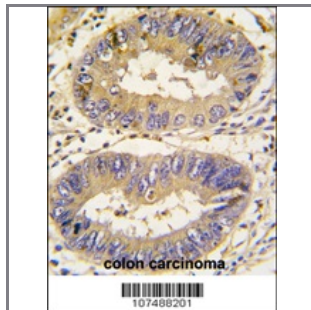
Purified Rabbit Polyclonal Antibody (Pab)

Catalog #	Applications:	Reactivity:	Accessions:
AP1817a	WB, IHC, E	H	Q676U5
Concentration:	Size:	Isotype:	Clone Name:
0.25 mg/ml	0.1 mg	Rabbit Ig	RB7487 / RB7488

Application Data: Calculated MW: 68265 Da



Western blot analysis of anti-Autophagy APG16L Antibody (N-term) (Cat.#AP1817a) in HeLa cell line lysates (35ug/lane). APG16L (arrow) was detected using the purified Pab.



Formalin-fixed and paraffin-embedded human colon carcinoma tissue reacted with Autophagy APG16L antibody (N-term), which was peroxidase-conjugated to the secondary antibody, followed by DAB staining. This data demonstrates the use of this antibody for immunohistochemistry; clinical relevance has not been evaluated.

Gene ID:	Gene Symbol:
55054	ATG16L1

Other Names:

hCG_1817841, APG16L, ATG16L, FLJ00045, FLJ10035, FLJ10828, FLJ22677, IBD10, WDR30, APG16 autophagy 16-like; APG16-like 1; APG16L beta; ATG16 autophagy related 16-like protein 1; WD repeat domain 30; autophagy-related protein 16-1

Target/Specificity:

This ATG16L antibody is generated from rabbits immunized with a KLH conjugated synthetic peptide between 1~30 amino acids from the N-term of human APG16L.

Application Notes:

The suggested dilution is:
ELISA 1:1,000
Western Blot 1:50~200
Immunohistochemistry 1:50~100

Format:

Purified polyclonal antibody supplied in PBS with 0.09% (W/V) sodium azide. This antibody is prepared by Saturated Ammonium Sulfate (SAS) precipitation followed by dialysis against PBS.

Storage:

Maintain refrigerated at 2-8°C for up to 6 months. For long term storage store at -20°C in small aliquots to prevent freeze-thaw cycles.

Precautions:

ATG16L Antibody (N-term) is for research use only and not for use in diagnostic or therapeutic procedures.
