

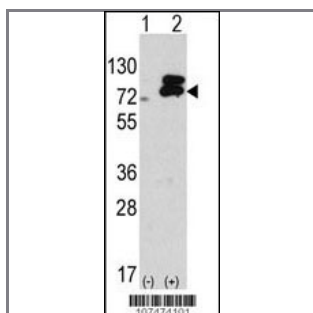
## ATG7 Antibody (C-term)

Purified Rabbit Polyclonal Antibody (Pab)

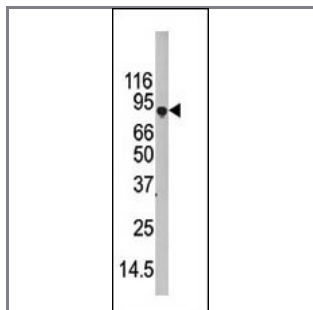
Catalog #	Applications:	Reactivity:	Accessions:
AP1813d	WB, IHC, E	H, C*, M*, R*	<a href="#">O95352</a>
Concentration:	Size:	Isotype:	Clone Name:
0.25 mg/ml	0.1 mg	Rabbit Ig	RB7474

### Application Data:

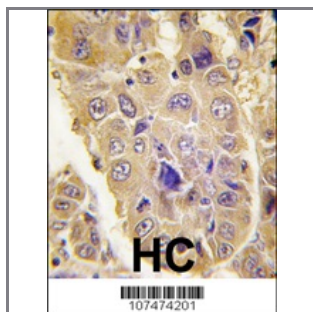
Calculated MW: 77960 Da



Western blot analysis of APG7L (C-term) Pab (Cat. #AP1813d) in 293 cell line lysates transiently transfected with the ATG7 gene (2ug/lane).



Western blot analysis of APG7L Pab (Cat. #AP1813d) in 293 cell line lysate (35ug/lane). APG7L (arrow) was detected using the purified Pab (1:NULL dilution).



Formalin-fixed and paraffin-embedded human hepatocarcinoma tissue reacted with Autophagy APG7L antibody (C-term), which was peroxidase-conjugated to the secondary antibody, followed by DAB staining. This data demonstrates the use of this antibody for immunohistochemistry; clinical relevance has not been evaluated.

Gene ID:	Gene Symbol:
<a href="#">10533</a>	ATG7

Other Names:

APG7-LIKE, APG7L, DKFZp434N0735, GSA7, APG7 autophagy 7-like; autophagy-related protein 7; hAGP7; ubiquitin activating enzyme E1-like protein; ubiquitin-activating enzyme E1-like protein

---

**Target/Specificity:**

This ATG7 antibody is generated from rabbits immunized with a KLH conjugated synthetic peptide between 547~577 amino acids from the C-term of human APG7L.

---

**Application Notes:**

The suggested dilution is:

ELISA 1:1,000

Western blotting 1:100~500

Immunohistochemistry 1:50~100

---

**Format:**

Purified polyclonal antibody supplied in PBS with 0.09% (W/V) sodium azide. This antibody is prepared by Saturated Ammonium Sulfate (SAS) precipitation followed by dialysis against PBS.

---

**Storage:**

Maintain refrigerated at 2-8°C for up to 6 months. For long term storage store at -20°C in small aliquots to prevent freeze-thaw cycles.

---

**Precautions:**

ATG7 Antibody (C-term) is for research use only and not for use in diagnostic or therapeutic procedures.

---