

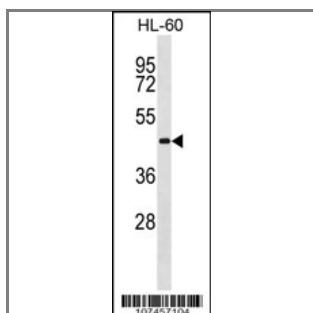
## ATG3 Antibody (C-term)

Purified Rabbit Polyclonal Antibody (Pab)

<b>Catalog #</b>	<b>Applications:</b>	<b>Reactivity:</b>	<b>Accessions:</b>
AP1807b	WB, E	H, B*, M*, R*	<a href="#">Q9NT62</a>
<b>Concentration:</b>	<b>Size:</b>	<b>Isotype:</b>	<b>Clone Name:</b>
0.25 mg/ml	0.1 mg	Rabbit Ig	RB7457

### Application Data:

Calculated MW: 35864 Da



APG3L Antibody (I98) (Cat. #AP1807b) western blot analysis in HL-60 cell line lysates (35ug/lane). This demonstrates the APG3L antibody detected the APG3L protein (arrow).

<b>Gene ID:</b>	<b>Gene Symbol:</b>
<a href="#">64422</a>	ATG3

### Other Names:

APG3, APG3-LIKE, APG3L, DKFZp564M1178, FLJ22125, MGC15201, PC3-96, 2610016C12Rik; APG3 autophagy 3-like; autophagy Apg3p/Aut1p-like; autophagy-related protein 3; hApg3

### Target/Specificity:

This ATG3 antibody is generated from rabbits immunized with a KLH conjugated synthetic peptide between 90~120 amino acids from the C-term of human APG3L.

### Application Notes:

The suggested dilution is:  
 ELISA 1:1,000  
 Western blotting 1:100~500

### Format:

Purified polyclonal antibody supplied in PBS with 0.09% (W/V) sodium azide. This antibody is prepared by Saturated Ammonium Sulfate (SAS) precipitation followed by dialysis against PBS.

### Storage:

Maintain refrigerated at 2-8°C for up to 6 months. For long term storage store at -20°C in small aliquots to prevent freeze-thaw cycles.

---

**Precautions:**

ATG3 Antibody (C-term) is for research use only and not for use in diagnostic or therapeutic procedures.

---