

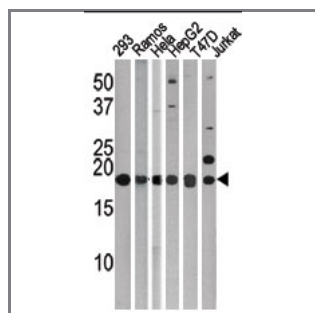
## LC3 Antibody (APG8C) (N-term)

Purified Rabbit Polyclonal Antibody (Pab)

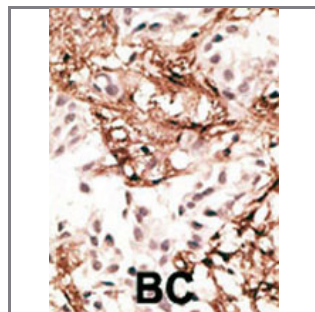
Catalog #	Applications:	Reactivity:	Accessions:
AP1804a	WB, IHC, E	H, M, R	<a href="#">Q9BXW4</a>
Concentration:	Size:	Isotype:	Clone Name:
0.25 mg/ml	0.1 mg	Rabbit Ig	RB7613

### Application Data:

Calculated MW: 16852 Da



The anti-LC3 (APG8c) Pab (Cat. #AP1804a) is used in Western blot to detect LC3 (APG8c) in, from left to right, 293, Ramos, Hela, HepG2, T47d, and Jurkat tissue lysates. LC3 (APG8c)(arrow) was detected using the purified Pab.



Formalin-fixed and paraffin-embedded human cancer tissue reacted with the primary antibody, which was peroxidase-conjugated to the secondary antibody, followed by AEC staining. This data demonstrates the use of this antibody for immunohistochemistry; clinical relevance has not been evaluated. BC = breast carcinoma; HC = hepatocarcinoma.

Gene ID:	Gene Symbol:
<a href="#">440738</a>	MAP1LC3C

### Other Names:

MAP1LC3C, microtubule-associated protein 1 light chain 3 gamma, LC3C; MAP1LC3C

### Target/Specificity:

This LC3 antibody is generated from rabbits immunized with a KLH conjugated synthetic peptide between 1~30 amino acids from the N-terminal region of human LC3 (APG8c).

### Application Notes:

The suggested dilution is:  
ELISA 1:1,000

Western blotting 1:100~500  
Immunohistochemistry 1:50~100

---

**Format:**

Purified polyclonal antibody supplied in PBS with 0.09% (W/V) sodium azide. This antibody is prepared by Saturated Ammonium Sulfate (SAS) precipitation followed by dialysis against PBS.

---

**Storage:**

Maintain refrigerated at 2-8°C for up to 6 months. For long term storage store at -20°C in small aliquots to prevent freeze-thaw cycles.

---

**Precautions:**

LC3 Antibody (APG8C) (N-term) is for research use only and not for use in diagnostic or therapeutic procedures.

---