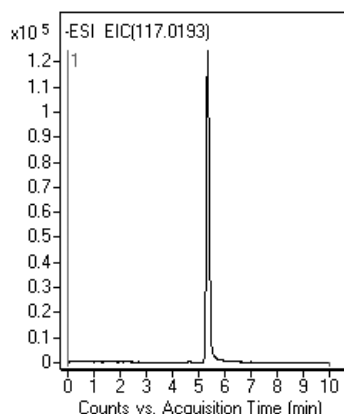
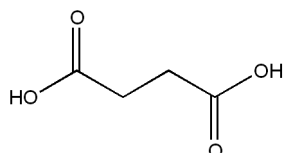


Succinic Acid: Rapid & Cost Effective Isocratic or Gradient

**Notes:**

When isocratic runs were used, at 95% B succinic acid was indefinitely retained on the column, so linear gradient conditions were used for analysis of this important acid.

All Type-C cogent columns equilibrate very rapidly to initial conditions when gradient analysis is used.

An intermediate of tricarboxylic acid cycle, succinic acid is produced and accumulated by anaerobic microorganisms. There is large interest in the production of this organic acid because it is a key compound in producing more than 30 commercially important products.

Method Conditions

Column: Cogent Diamond Hydride™ 4μm, 100Å.
Catalog No.: 70000-15P-2
Dimensions: 2.1 x150 mm
Solvents: A: 50% Methanol/50% DI water + 10mM ammonium acetate
 B: 90% Acetonitrile/10% DI water + 10mM ammonium acetate

Gradient:	Time (min)	%B
	0.00	100.0
	5.00	50.0
	7.00	50.0
	9.00	100.0
	10.00	100.0

Post time: 5 min
Flow rate: 0.4 mL/min.
Sample: Succinic acid 117.0193 m/z (M-H)⁻ RT=5.33 min
 100 ng/mL prepared in 50%A/50%B and diluted 1:10 before analysis.
Detection: ESI – neg - Agilent 6210 MSD TOF mass spectrometer.

Discussion

The analysis of succinic acid is mostly performed by gas chromatography (GC), enzymatic assays, ion-exclusion chromatography (IEC) or by reversed phase HPLC. However, these techniques are time consuming and analysis time is very often longer than 1 hour.

In this application note we are reporting a rapid, cost effective screening method for the detection of this important organic acid. This method can be utilized to screen a large number of microbes producing succinic acid in a very short time (under 10 minutes). This proposed method was found to be an attractive choice for the analysis of this compound in drug dissolution media, in which is it used as a pH adjuster.

For more information visit www.MTC-USA.com

Cat. No.	Description
----------	-------------

70000-15P-2	Cogent Diamond Hydride™ HPLC Column, 100Å, 4μm, 2.1 x 150mm
-------------	---