



MDF-DU702VH-PA | 76020-716

## VIP® ECO

ENERGY STAR® Certified  
Natural Refrigerant -86°C Freezer



MDF-DU702VH-PA | 76020-716

25.7 cu.ft. | 729 L

Using natural refrigerants, the VIP ECO 25.7 cu.ft. (729 L) upright ultra-low temperature freezer delivers the lowest daily energy usage of any model in its class.<sup>1)</sup> Performance, reliability and energy efficiency combine to secure your most valuable biological samples.

### Performance and Reliability

The robust refrigeration system provides dependable cooling and temperature performance through specialty engineered heat transfer components and time-tested natural refrigerants. Reserve refrigeration power assures exceptionally fast temperature recovery following door openings. Performance and reliability are never compromised when it comes to storing your valued products.

### Energy Efficient,<sup>1)</sup> Balanced Power

Smart compressors, natural refrigerants and integrated electronics combine to lower your facility's operating costs.

- 7.87 kWh/day, ENERGY STAR MDEC (Maximum Daily Energy Consumption)
- 8.40 kWh/day, Steady State at -80°C
- 6.19 kWh/day, Steady State at -70°C

Temperature Uniformity

- ±2.67° at -80°C
- ±1.95 at -70°C

### Security Control and Monitoring

An eye level, door mounted color LCD touchscreen allows full user control while the USB port makes transferring logged data to a PC convenient. All performance attributes are displayed and an internal temperature log is expressed in graphic form over time.



### Natural Refrigerants

Natural refrigerants minimize environmental impact without jeopardizing ultra-low temperature freezer performance.



### EZlatch

EZlatch is the centerpiece of a holistic access and frost mitigation system. Simplified one-handed operation maintains the integrity of the door seal to assure energy efficiency.



### Ease of Use

A full function display panel includes audible and visual warnings, unit diagnostics, temperature and door opening history.

# VIP<sup>ECO</sup> -86°C ULT Upright Freezer

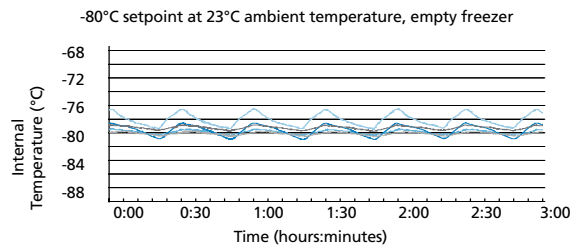
MDF-DU702VH-PA | 76020-716



## Efficient Sample Storage

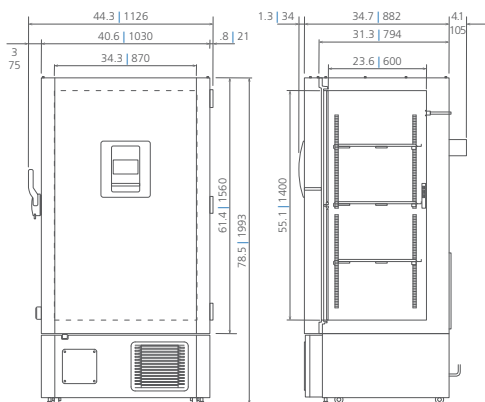
The upright cabinet design employs patented VIP Plus insulated panels that offer space efficiency. This allows the freezer cabinet to maximize storage space, holding up to 576, 2" boxes within a 9.78 sq.ft. (0.91 m<sup>2</sup>) footprint.

## Temperature Uniformity Data:



## Dimensions

Unit : inch | mm



\*Note: External cabinet depth of 37.5" (952 mm) permits passage through a standard 38" (965 mm) doorway when rear stand-off brackets are removed, four screws. Bracket removal is not required for 40" (1016 mm) doorway.

**VWR**  
We Enable Science

**1.800.932.5000**  
**vwr.com**

Prices and product details are current when published; subject to change without notice. [Certain products may be limited by federal, state, provincial, or local regulations. VWR makes no claims or warranties concerning sustainable/green products. Any claims concerning sustainable/green products are the sole claims of the manufacturer and not those of VWR International, LLC. All prices are in US dollars unless otherwise noted. Offers valid in US and Canada, void where prohibited by law or company policy, while supplies last. VWR, the VWR logo and variations on the foregoing are registered (®) or unregistered trademarks and service marks of VWR International, LLC and its related companies. All other marks referenced are registered by their respective owner(s). Visit [vwr.com](http://vwr.com) to view our privacy policy, trademark owners and additional disclaimers. ©2018 VWR International, LLC. All rights reserved.

Model Number		MDF-DU702VH-PA   76020-716
External Dimensions (W x D x H) <sup>1)</sup>	inches   mm	40.6 x 34.7 x 78.5   1030 x 882 x 1993
Internal Dimensions (W x D x H)	inches   mm	34.3 x 23.6 x 55.1   870 x 600 x 1400
Volume	cu.ft.   liters	25.7   729
Net Weight	lbs   kg	613   278
Capacity (2" boxes)	qty	576
Capacity (3" boxes)	qty	384
Inventory Racks (2" boxes)	qty	24
Inventory Racks (3" boxes)	qty	24
Performance		
Warranty <sup>2)</sup>		5 years parts and labor
Cooling Performance <sup>3)</sup>	°C	-86
Temperature Setting Range <sup>3)</sup>	°C	-50 to -90 in 1° increments
Temperature Control Range <sup>3)</sup>	°C	-50 to -86 in 1° increments
Control		
Controller		Microprocessor, touchscreen data entry, password protected
Display		LCD color touchscreen
Temperature Sensor		Pt-1000
Refrigeration		
Refrigeration System		Synchronized variable speed cascade system
Compressors	W	(2) 750, variable speed
Refrigerant		High-stage R-290 natural refrigerant Low-stage R-170 natural refrigerant
Insulation Thickness, Material	inches   mm	3.1   80, rigid polyurethane foam (PUF) + VIP Plus vacuum insulated panels
Construction		
Exterior Material		Painted electrogalvanized steel
Interior Material		Powder coated electrogalvanized steel
Outer Door	qty	1 (key lock with provision for optional pad lock)
Inner Doors	qty	2 (insulated, ABS, stainless steel frames, positive latches)
Shelves	qty	3 (adjustable)
Shelf Dimensions (W x D)	inches   mm	33.6 x 21.0   855 x 534
Max. Load per Shelf	lbs   kg	110   50
Auto Vacuum Relief	qty	1: in door
Manual Vacuum Relief	qty	1: lower left side
Access Ports	qty	3: upper back wall (back-up system), bottom left (recorder sensor), bottom right (access)
Access Port Diameter	inches   mm	0.6   17
Casters	qty	4 (2 leveling feet on front base)
Alarms (V = Visual Alarm, B = Buzzer Alarm, R = Remote Alarm)		
Power Failure		V-B-R
Temperature (High and Low)		V-B-R
Sensor Failure		V-B-R
Door Open		V-B
Battery Check		V
Fan Motor Check		V
Cooling Circuit Abnormality		V
Remote Alarm Contacts		DC 30V 2A (normally open, normally closed, common)
Electrical and Noise Level		
Power Supply		220V, 1Ø, NEMA 6-15P, requires NEMA 6-15R receptacle
Noise Level <sup>4)</sup>	dB(A)	46
Options		
Inner Door Kit with 5 Smaller Doors		MDF-7ID5-PW
Inner Door Kit with 4 Smaller Doors		MDF-7ID4-PW
Liquid CO <sub>2</sub> Back-Up System		MDF-UB7-PW
Temperature Recorder		
Circular Type	6", 7 day circular	MTRC954   97014-882
Chart Paper	52 charts per box	C7100386REV
Ink Pen	pack of 6	R252
Optional Communication System		
Wireless, Cloud-Based, Automatic Data Management		LabAlert® Monitoring System

- <sup>1)</sup> Exterior dimensions of main cabinet only, excluding handle and other external projections  
<sup>2)</sup> Current warranty offered at time of printing and may be subject to change; US and Canada only  
<sup>3)</sup> Air temperature measured at freezer center, ambient temperature +30°C, no load  
<sup>4)</sup> Nominal value, background noise 20 dB(A)

Specifications are subject to change without notice.  
 Performance data herein is based on independent testing at time of publication.

