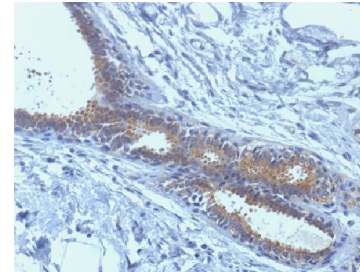


# Anti-BRCA1 Antibody (BRCA1/1398)

<b>CATALOG NO:</b>	A1448-100
<b>ALTERNATIVE NAMES:</b>	BRCA1, Breast and ovarian cancer susceptibility protein 1, Breast Cancer 1 Early Onset, Breast cancer type 1 susceptibility protein, BROVCA1, IRIS, PNCA4, PPP1R53, Protein phosphatase 1 regulatory subunit 53, PSCP, RING finger protein 53, RNF53
<b>AMOUNT:</b>	100 µg
<b>IMMUNOGEN:</b>	Recombinant human BRCA1 protein fragment (aa445-620)
<b>HOST/ISOTYPE:</b>	Mouse IgG1, kappa
<b>CLONALITY:</b>	Monoclonal
<b>CLONE:</b>	BRCA1/1398
<b>MOL WEIGHT:</b>	220 kDa
<b>SPECIES REACTIVITY:</b>	Human
<b>PURIFICATION:</b>	Protein A/G purified
<b>FORM:</b>	Liquid
<b>FORMULATION:</b>	Supplied in 10 mM PBS with 0.05% BSA & 0.05% azide
<b>STORAGE CONDITIONS:</b>	Shipped at 4°C. For long term storage store at -20°C in small aliquots to prevent freeze-thaw cycles
<b>DESCRIPTION:</b>	This gene encodes a nuclear phosphoprotein that plays a role in maintaining genomic stability, and it also acts as a tumor suppressor. The encoded protein combines with other tumor suppressors, DNA damage sensors, and signal transducers to form a large multi-subunit protein complex known as the BRCA1-associated genome surveillance complex (BASC). This gene product associates with RNA polymerase II, and through the C-terminal domain, also interacts with histone deacetylase complexes. This protein thus plays a role in transcription, DNA repair of double-stranded breaks, and recombination. Mutations in this gene are responsible for approximately 40% of inherited breast cancers and more than 80% of inherited breast and ovarian cancers. Alternative splicing plays a role in modulating the subcellular localization and physiological function of this gene.
<b>APPLICATION:</b>	FC: 0.5-1 ug/1X10 <sup>6</sup> cells IF: 1-2 ug/ml IHC: 5-10 ug/ml for 60 minutes at RT (Staining of formalin-fixed tissues requires boiling tissue sections in 10mM citrate buffer, pH 6.0, for 10-20 min followed by cooling at RT for 20 minutes)

**Note:** This information is only intended as a guide. The optimal dilutions must be determined by the user.



Formalin-fixed, paraffin-embedded human Breast Carcinoma stained with BRCA1 Monoclonal Antibody (BRCA1/1398)

## RELATED PRODUCTS:

- Anti-Bcl-2 Antibody (100/D5 + 124) (**Cat. No. A1435**)
- Anti-Bcl-6 Antibody (BCL6/1475) (**Cat. No. A1436**)
- Anti-Bcl-6 Antibody (BCL6/1527) (**Cat. No. A1437**)
- Anti-Bax Antibody (BAX/962) (**Cat. No. A1434**)
- Anti-Adipophilin Antibody (ADFP/1494) (**Cat. No. A1422**)
- Anti-AFP Antibody (C3) (**Cat. No. A1423**)
- Anti-ALDH1A1 Antibody (ALDH1A1/1381) (**Cat. No. A1424**)
- Anti-ALK Antibody (ALK/1503) (**Cat. No. A1425**)
- Anti-Alkaline Phosphatase Antibody (ALPL/597) (**Cat. No. A1426**)
- Anti-Alpha-1-Antitrypsin Antibody (AAT/1378) (**Cat. No. A1427**)

**FOR RESEARCH USE ONLY! Not to be used on humans.**