

for  
10ml  
5ml  
pipette

# Repetitive Pipette Peggy

No electric power required at all !



Aspirate the sample  
all at once,  
dispensing its necessary  
volume repetitively.

1



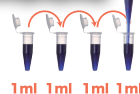
Push in the aspiration button once slowly  
until the end to aspirate the set volume.

2



Dispensing button

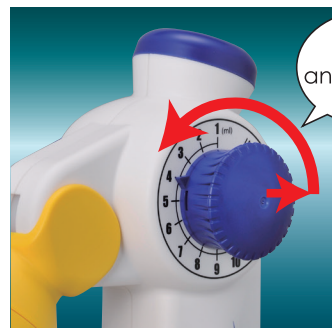
A single push of the dispensing button  
dispensed the set volume.  
Can also change the dispensing capacity  
Note once per minute.



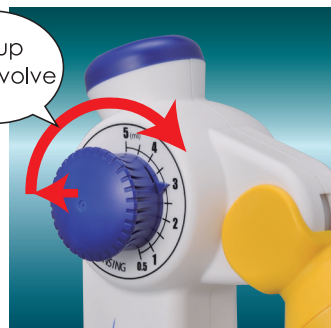
1ml 1ml 1ml 1ml

## Setting aspiration volume

## Setting dispensing volume

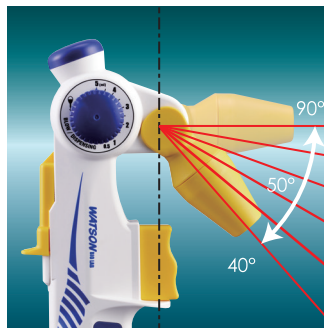


Aspiration can be set in every  
1ml for setting range 1ml~13ml.



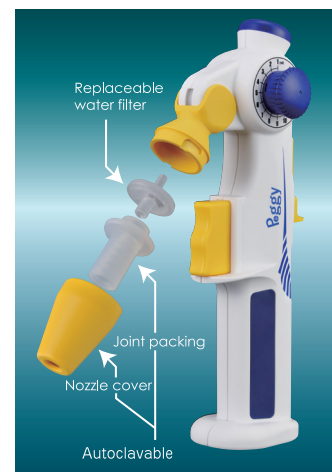
Dispensing can be set in every  
0.5ml for setting range 0.5ml~5ml.

## Flexible nozzle-angle



Adjustable nozzle angle in  
every 10 degrees up 50 degrees.

## Simple maintenance



Easy to remove & set spare parts  
- Nozzle cover: Autoclavable  
- Joint packing: Autoclavable  
- Water filter: Replaceable

Note: 13ml can be dispensed in case that Watson 10ml Disposable Pipette is used.  
Precaution in case of using 5ml disposable pipette:

Please DO NOT set aspiration volume exceeding 5ml in case that 5ml disposable pipette is used. It may cause an accidental liquid suction leading to malfunction on Peggy.

Cat.No.	Item	Aspiration Volume		Discharge Volume		Packaging
		max.	min.	max.	min.	
75982-726	PEGGY-01 Repetitive Pipette "Peggy"	13 ml	1 ml	5 ml	0.5 ml	1 pce./box



Watson's NEXTY series is the Next Generation of Micro-Pipettors developed through our years of experience and knowledge in the field. We offer a full line of single and 8 multichannel pipettors as well as low cost fixed pipettors.

75982-716



Dimension of the stand body :  
height-approx. 330 mm,  
Maximum diameter-approx. 200 mm



### Triple-Speed Turbo Dial

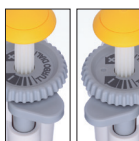
NEXTY's triple-speed turbo dial performs easy-to-use volume setting.

One rotation of Triple Dial is equal to 3.5 rotations of the ordinary push-button dial which is useful when making a large sample volume change.



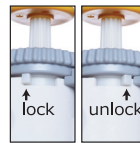
### Color-coded Push-button

NEXTY's unique, Mushroom-shaped push button reduces repetitive stress on the thumb. The sample volume is quickly distinguished by the Color-coded push-button.



### Right/left-selectable eject button

Left-handed eject button is also available as an option.



### Lock lever



### Easy-to-see digital display



### Autoclavable bottom parts (Single channel)



### Eight-channel multi-suspension system (Multi channel)

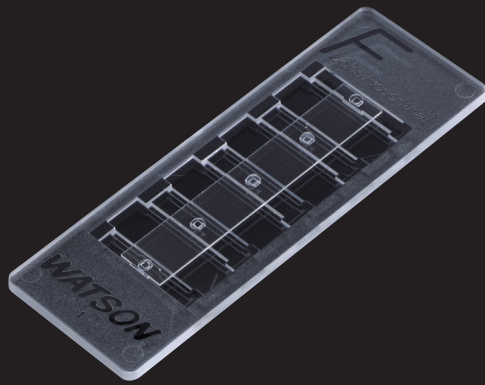
Eight lanes are respectively equipped with independent suspension to ensure accurate tip insertion.

Cat. No.	Item	Minimal scale	Volume	Accuracy	Precision	Compatible tip	Packaging
75982-686	NEXTY-2 Single Channel pipettor 0.2~2 $\mu$ l	0.001 $\mu$ l	0.2 $\mu$ l 2 $\mu$ l	$\leq \pm 15.0\%$ $\leq \pm 2.5\%$	$\leq 8.0\%$ $\leq 1.0\%$	204/207/201	1 unit
75982-688	NEXTY-10 Single Channel pipettor 1~10 $\mu$ l	0.01 $\mu$ l	1 $\mu$ l 10 $\mu$ l	$\leq \pm 5.0\%$ $\leq \pm 1.0\%$	$\leq 2.5\%$ $\leq 0.5\%$	204/207/201	1 unit
75982-690	NEXTY-20 Single Channel pipettor 2~20 $\mu$ l	0.01 $\mu$ l	2 $\mu$ l 20 $\mu$ l	$\leq \pm 6.0\%$ $\leq \pm 1.0\%$	$\leq 3.0\%$ $\leq 0.5\%$	705/703/503	1 unit
75982-692	NEXTY-100 Single Channel pipettor 10~100 $\mu$ l	0.1 $\mu$ l	10 $\mu$ l 100 $\mu$ l	$\leq \pm 2.0\%$ $\leq \pm 0.8\%$	$\leq 1.0\%$ $\leq 0.3\%$	705/703/503/505/801	1 unit
75982-694	NEXTY-200 Single Channel pipettor 20~200 $\mu$ l	0.1 $\mu$ l	20 $\mu$ l 200 $\mu$ l	$\leq \pm 2.0\%$ $\leq \pm 0.8\%$	$\leq 1.0\%$ $\leq 0.3\%$	705/703/503/505/801	1 unit
75982-696	NEXTY-1000 Single Channel pipettor 100~1000 $\mu$ l	1 $\mu$ l	100 $\mu$ l 1000 $\mu$ l	$\leq \pm 2.0\%$ $\leq \pm 0.8\%$	$\leq 0.6\%$ $\leq 0.3\%$	502/706/804/806/805	1 unit
75982-698	NEXTY-5000 Single Channel pipettor 500~5000 $\mu$ l	5 $\mu$ l	500 $\mu$ l 5000 $\mu$ l	$\leq \pm 2.0\%$ $\leq \pm 0.8\%$	$\leq 0.6\%$ $\leq 0.3\%$	401	1 unit
75982-700	NEXTY 8 Multi Channel pipettor 1~10 $\mu$ l	0.01 $\mu$ l	1 $\mu$ l 10 $\mu$ l	$\leq \pm 8.0\%$ $\leq \pm 2.0\%$	$\leq 5.0\%$ $\leq 1.0\%$	207/204/201	1 unit
75982-702	NEXTY 8 Multi Channel pipettor 20~200 $\mu$ l	0.1 $\mu$ l	20 $\mu$ l 200 $\mu$ l	$\leq \pm 8.0\%$ $\leq \pm 1.0\%$	$\leq 1.0\%$ $\leq 0.5\%$	705/703/503/505/801	1 unit
75982-716	NEXTY Pipettor Carousel Stand						1 unit

Note: Each pipettor is calibrated with a tip in bold letter shown above. Other tips if used may cause a slight deviation in performance.



# Cell Counter Plate



## Disposable Cell Counting Plate

- Cost-saving as 4-count per plate.
- Better grid linearity & smoothness, and lower cost compared with glass plate.
- Easy to count due to clear visibility.
- Plastic cover film is originally mounted on the plate.
- 4 Grid patterns are available for choice (See below).

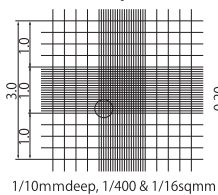


### Packaged in a plastic case

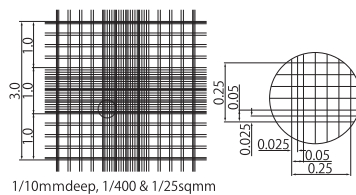
The plastic case prevents damage and stores cell counters safely and cleanly.

## 4 Grid Patterns

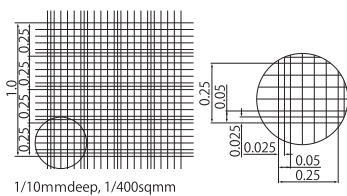
### 75982-980 Neubauer Improved



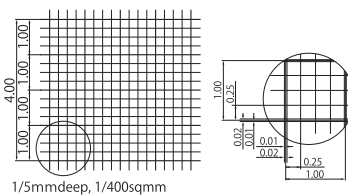
### 75982-982 Burker-Turk



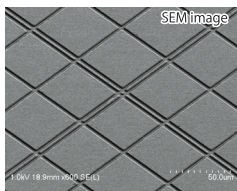
### 75982-984 Thoma



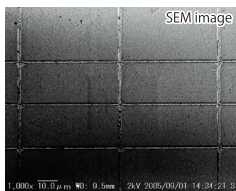
### 75982-986 Fuchs Rosenthal



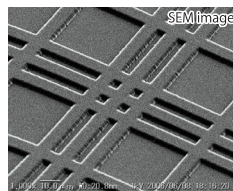
Easier to count because cells do not get stuck on the grid lines that are molded in the groove form. Cells are easier to be observed because the grid lines are thinner and smoother than glass slide.



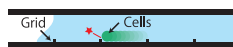
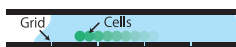
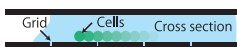
Watson  
(Grid lines are in the groove form)



Glass (Grid lines are rough)



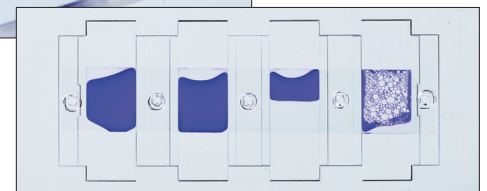
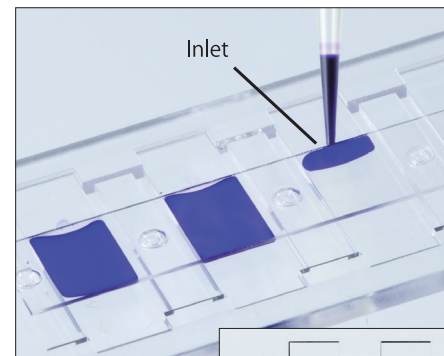
Other Companies plastic grid  
(Grid lines are convex)



## The ready-mounted plastic cover film provides easy handling

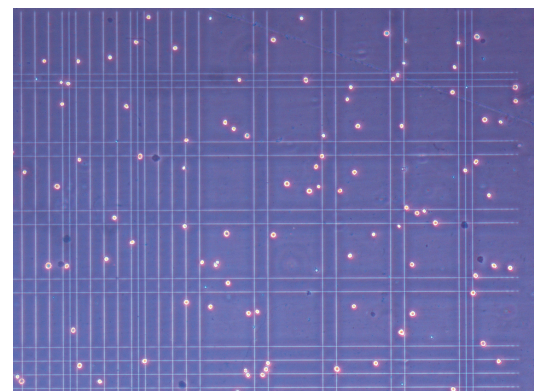
The cover film is originally mounted on the plate and it helps to reduce fluctuation of cell count caused by operator's skill.

1. Pipette 6  $\mu$ l of a sample (12  $\mu$ l only for Fuchs Rosenthal) into inlet.



Good Good NG Bubbles NG

2. Set a cell counter on microscope and leave it for 2-3 minutes.



3. Count cells.
4. Calculate using a specified formula.

Cat. No.	Item	Unit	Case
75982-980	Disposable Cell Counting Plate, Improved Neubauer Type	10plates	30units
75982-982	Disposable Cell Counting Plate, Burker-Turk Type	10plates	30units
75982-984	Disposable Cell Counting Plate, Thoma Type	10plates	30units
75982-986	Disposable Cell Counting Plate, Fuchs Rosenthal Type	10plates	30units

# A centrifuge rack that can also be used as a floater.

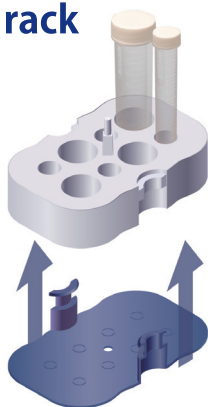
## Centrifuge Tube Floating Rack "Jellyfish"

- Dedicated rack for four 15ml/50ml centrifuge tubes.
- The rack can be used as a floater  
by changing the direction of the tray. (See below)
- Made of polypropylene and can be autoclaved.



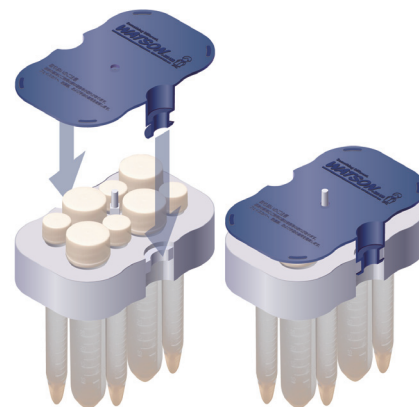
**Dual-  
use**

### ■ As the rack



Attach a tray to the bottom of the rack as a receptacle.

### ■ As the floater



Attach a tray onto the top of the rack (after putting centrifuge tubes) as a stopper to prevent centrifuge tubes from floating.

Cat. No.	Item	Unit
75982-950	Centrifuge Tube Floater Rack "Jellyfish"	1 piece

Something Different.

**WATSON**® BIO LAB  
MADE IN JAPAN SINCE 1988

<http://www.watsonbiolab.com>

Sold by: **Watson Bio Lab USA**

6540 Lusk Blvd. Suite C158A, San Diego, CA 92121 TEL 949-395-8460  
info@watsonbiolab.com

Manufactured by: **FUKAEKASEI** CO., LTD.

MADE IN JAPAN

**VWR**®  
We Enable Science

1.800.932.5000  
vwr.com

Prices and product details are current when published; subject to change without notice. [Certain products may be limited by federal, state, provincial, or local regulations. | VWR makes no claims or warranties concerning sustainable/green products. Any claims concerning sustainable/green products are the sole claims of the manufacturer and not those of VWR International, LLC. All prices are in US dollars unless otherwise noted. Offers valid in US and Canada, void where prohibited by law or company policy, while supplies last. | VWR, the VWR logo and variations on the foregoing are registered (®) or unregistered trademarks and service marks, of VWR International, LLC and its related companies. All other marks referenced are registered by their respective owner(s). | Visit vwr.com to view our privacy policy, trademark owners and additional disclaimers. ©2017 VWR International, LLC. All rights reserved.

※The specification of the product might change without a previous notice.

0717 Lit. No. 230016W