



## Anti-RAT IgG (H&L) (RABBIT) Antibody (Min X Human Serum Proteins) - 612-4126

**Code:** 612-4126

**Size:** 2 mg

**Product Description:** Anti-RAT IgG (H&L) (RABBIT) Antibody (Min X Human Serum Proteins) - 612-4126

**Concentration:** 1.97 mg/mL by UV absorbance at 280 nm

**PhysicalState:** Liquid (sterile filtered)

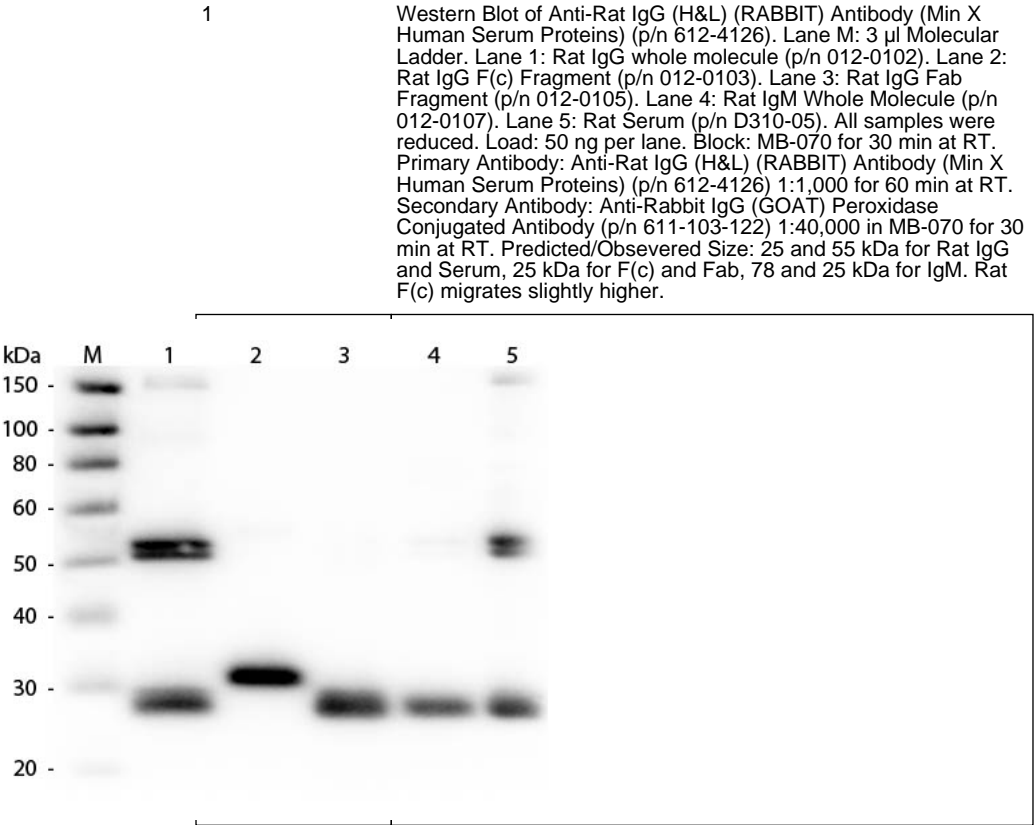
<b>Label</b>	Unconjugated
<b>Host</b>	Rabbit
<b>Species Reactivity</b>	Rat
<b>Buffer</b>	0.02 M Potassium Phosphate, 0.15 M Sodium Chloride, pH 7.2
<b>Stabilizer</b>	None
<b>Preservative</b>	0.01% (w/v) Sodium Azide
<b>Storage Condition</b>	Store vial at 4° C prior to opening. This product is stable for several weeks at 4° C as an undiluted liquid. Dilute only prior to immediate use. For extended storage aliquot contents and freeze at -20° C or below. Avoid cycles of freezing and thawing.
<b>Synonyms</b>	Rat IgG (H&L) Antibody, Rabbit-a-Rat IgG (H&L), Rat IgG (H&L) Antibody in rabbit, Rabbit IgG (H&L) Secondary Antibody.
<b>Application Note</b>	Antibody anti-Rat has been assayed against 1.0 ug of Rat IgG in a standard capture ELISA using ABTS (2,2'-azino-bis-[3-ethylbenthiazoline-6-sulfonic acid]) code # ABTS-100 as a substrate for 30 minutes at room temperature. A working dilution of 1:2,000 to 1:8,000 of the reconstitution concentration is suggested for this product. Antibody anti-Rat has been assayed against 1.0 ug of Rat IgG in a standard capture ELISA using ABTS (2,2'-azino-bis-[3-ethylbenthiazoline-6-sulfonic acid]) code # ABTS-100 as a substrate for 30 minutes at room temperature. A working dilution of 1:2,000 to 1:8,000 of the reconstitution concentration is suggested for this product.
<b>Background</b>	Anti-Rat IgG (H&L) antibody generated in rabbit detects specifically rat IgG (H&L). This secondary antibody anti-Rat is ideal for investigators who routinely perform titration assays, western-blot, immunoprecipitation and more generally immunoassays.
<b>Purity And Specificity</b>	This product was prepared from monospecific antiserum by immunoaffinity chromatography using Rat IgG coupled to agarose beads followed by solid phase adsorption(s) to remove any unwanted reactivities. Assay by immunoelectrophoresis resulted in a single precipitin arc against anti-Rabbit Serum, Rat IgG and Rat Serum. No reaction was observed against Human Serum Proteins.
<b>Assay Dilutions</b>	User Optimized
<b>ELISA</b>	1:20,000 - 1:300,000
<b>Immunohistochemistry</b>	1:1,000-1:5,000
<b>WESTERN BLOT</b>	1:2,000-1:10,000
<b>IHC</b>	1:1,000-1:5,000
<b>OTHER ASSAYS</b>	User Optimized
<b>Expiration</b>	Expiration date is one (1) year from date of opening.
<b>Immunogen</b>	Anti-Rat IgG (H&L) was produced by repeated immunization with rat IgG whole molecule in rabbit

### Related Products

610-4302	Anti-MOUSE IgG (H&L) (RABBIT) Antibody Peroxidase Conjugated - 610-4302
611-1302	Anti-RABBIT IgG (H&L) (GOAT) Antibody Peroxidase Conjugated - 611-1302
B304	NORMAL GOAT SERUM (NGS) - B304
B552-0500	BLOTTO A PRE-MIXED - for a 1X SOLUTION of Immunoanalytical Grade 5% NON-FAT DRY MILK in TBS with TWEEN-20 - B552-0500

Related Links

Images



Disclaimer

This product is for research use only and is not intended for therapeutic or diagnostic applications. Please contact a technical service representative for more information. All products of animal origin manufactured by Rockland Immunochemicals are derived from starting materials of North American origin. Collection was performed in United States Department of Agriculture (USDA) inspected facilities and all materials have been inspected and certified to be free of disease and suitable for exportation. All properties listed are typical characteristics and are not specifications. All suggestions and data are offered in good faith but without guarantee as conditions and methods of use of our products are beyond our control. All claims must be made within 30 days following the date of delivery. The prospective user must determine the suitability of our materials before adopting them on a commercial scale. Suggested uses of our products are not recommendations to use our products in violation of any patent or as a license under any patent of Rockland Immunochemicals, Inc. If you require a commercial license to use this material and do not have one, then return this material, unopened to: Rockland Inc., P.O. BOX 5199, Limerick, Pennsylvania, USA.