

Anti-14-3-3 (Rabbit) Antibody - 612-401-D01

Code: 612-401-D01

Size: 100 µL

Product Description: Anti-14-3-3 (Rabbit) Antibody - 612-401-D01

Concentration: Titrated value sufficient to run approximately 10 mini blots.

PhysicalState: Liquid

Label	Unconjugated
Host	Rabbit
Gene Name	YWHAB
Species Reactivity	rat
Buffer	0.01 M HEPES, 0.15 M Sodium Chloride, pH 7.5
Stabilizer	0.1 mg/ml Bovine Serum Albumin (BSA) - IgG and Protease free, 50% (v/v) Glycerol
Storage Condition	Store vial at -20° C prior to opening. This product is stable at 4° C as an undiluted liquid. For extended storage, aliquot contents and freeze at -20° C or below. Avoid cycles of freezing and thawing. Dilute only prior to immediate use.
Synonyms	14-3-3 protein beta/alpha, Prepronerve growth factor RNH-1, Protein kinase C inhibitor protein 1
Application Note	14-3-3 antibody is suitable for use in Western Blotting. Specific conditions for reactivity should be optimized by the end user. Expect a band of approximately 29 kDa in size corresponding to 14-3-3 protein in the appropriate cell lysate or extract.
Background	14-3-3 Antibody detects 14-3-3 protein. 14-3-3 is member of a family of highly conserved proteins that appear to have multiple roles in cell signaling. 14-3-3 is abundantly expressed in the brain and have been detected in the cerebrospinal fluid of patients with different neurological disorders. 14-3-3 proteins bind protein ligands that are typically phosphorylated on serine or threonine residues and regulate the functions of these binding partners by a number of different mechanisms. The 14-3-3 proteins affect a diverse array of cellular processes including the cell cycle and transcription, signal transduction and intracellular trafficking. Anti-14-3-3 antibody is ideal for investigators involved in Cell Signaling, Neuroscience, Signal Transduction research.
Purity And Specificity	Anti-14-3-3 Antibody is directed against rat 14-3-3 protein. The antibody was affinity purified from monospecific antiserum by immunoaffinity purification. Immunolabeling of the 14-3-3 protein band is completely blocked by pre-adsorption of the antibody with the peptide that was used to generate the antibody. Reactivity is expected from the following species based on 100% sequence homology: bovine, canine, chicken, human, mouse, non-human primates, Xenopus and zebra fish.
WESTERN BLOT	1:1000
Expiration	Expiration date is one (1) year from date of opening.
Immunogen	Anti-14-3-3 Antibody was produced by repeated immunizations with synthetic phospho-peptide corresponding to amino acid residues from the C-terminal region.
General Reference	Berg D, Holzmann C and Riess O (2003). 14-3-3 Proteins in the nervous system. Nat Rev Neurosci 4:752-762. Bridges D and Moorhead GB (2005). 14-3-3 Proteins: a number of functions for a numbered protein. Sci STKE 2005:re10. Dougherty MK and Morrison DK (2004). Unlocking the code of 14-3-3. J Cell Sci 117:1875-1884. Silhan J, Obsilova V, Vecer J, Herman P, Sulc M, Teisinger J and Obsil T (2004). 14-3-3 Protein C-terminal stretch occupies ligand binding groove and is displaced by phosphopeptide binding. J Biol Chem 279:49113-49119. Surgucheva I, Shestopalov VI and Surguchov A (2008). Effect of -Synuclein Silencing on Apoptotic Pathways in Retinal Ganglion Cells J. Biol. Chem., 283: 36377 - 36385.

Related Products

200-301-174	Anti-p53 (MOUSE) Monoclonal Antibody - 200-301-174
600-401-281	Anti-MAPKAP Kinase 2 (RABBIT) Antibody - 600-401-281
611-103-122	Anti-RABBIT IgG (H&L) (GOAT) Antibody Peroxidase Conjugated (Min X Bv Ch Gt GP Ham Hs Hu Ms Rt & Sh Serum Proteins) - 611-103-122
B501-0500	BLOTTO Immunoanalytical Grade (Non-Fat Dry Milk) - B501-0500

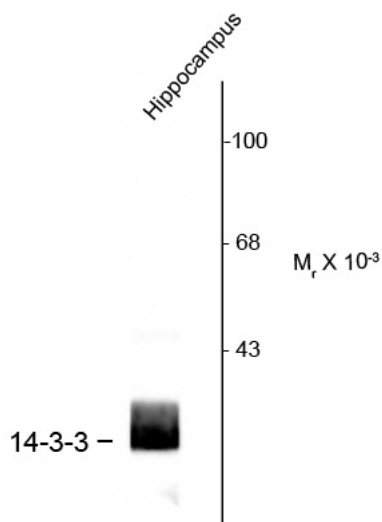
Related Links

UniProtKB - P35213	http://www.uniprot.org/uniprot/P35213
GeneID - 56011	http://www.ncbi.nlm.nih.gov/sites/entrez?db=gene&term=56011
NCBI - NP_062250.1	http://www.ncbi.nlm.nih.gov/protein/NP_062250.1

Images

1 Western Blot of Rabbit Anti-14-3-3 Protein antibody. Lane 1: rat hippocampal lysate. Lane 2: none. Load: 10 µg per lane. Primary antibody: 14-3-3 antibody at 1:400 for overnight at 4°C. Secondary antibody: IRDye800™ rabbit secondary antibody at 1:10,000 for 45 min at RT. Block: 5% BLOTTO overnight at 4°C. Predicted/Observed size: ~29kDa, ~29kDa for 14-3-3 protein. Other band(s): none.

Anti-14-3-3 Protein



Western blot of rat hippocampal lysate showing specific immunolabeling of the ~29k 14-3-3 protein.

Disclaimer

This product is for research use only and is not intended for therapeutic or diagnostic applications. Please contact a technical service representative for more information. All products of animal origin manufactured by Rockland Immunochemicals are derived from starting materials of North American origin. Collection was performed in United States Department of Agriculture (USDA) inspected facilities and all materials have been inspected and certified to be free of disease and suitable for exportation. All properties listed are typical characteristics and are not specifications. All suggestions and data are offered in good faith but without guarantee as conditions and methods of use of our products are beyond our control. All claims must be made within 30 days following the date of delivery. The prospective user must determine the suitability of our materials before adopting them on a commercial scale. Suggested uses of our products are not recommendations to use our products in violation of any patent or as a license under any patent of Rockland Immunochemicals, Inc. If you require a commercial license to use this material and do not have one, then return this material, unopened to: Rockland Inc., P.O. BOX 5199, Limerick, Pennsylvania, USA.