



## Anti-RAT IgG (H&L) (GOAT) Antibody Alkaline Phosphatase Conjugated (Min X Bv Ch Gt GP Ham Hs Hu Ms Rb & Sh Serum Proteins) - 612-105-120

**Code:** 612-105-120

**Size:** 1 mg

**Product Description:** Anti-RAT IgG (H&L) (GOAT) Antibody Alkaline Phosphatase Conjugated (Min X Bv Ch Gt GP Ham Hs Hu Ms Rb & Sh Serum Proteins) - 612-105-120

**Concentration:** 1.0 mg/mL by UV absorbance at 280 nm

**PhysicalState:** Liquid (sterile filtered)

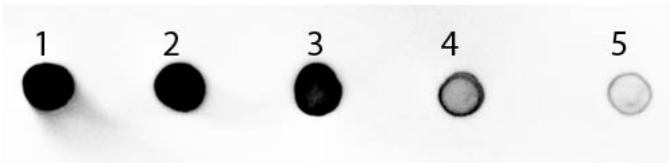
<b>Label</b>	Alkaline Phosphatase (Calf Intestine)
<b>Host</b>	Goat
<b>Species Reactivity</b>	Rat
<b>Buffer</b>	0.05 M Tris Chloride, 0.15M Sodium Chloride, 0.001M Magnesium Chloride, 0.0001M Zinc Chloride, 50% (v/v) Glycerol; pH 8.0
<b>Stabilizer</b>	10 mg/mL Bovine Serum Albumin (BSA) - Immunoglobulin and Protease free
<b>Preservative</b>	0.1% (w/v) Sodium Azide
<b>Storage Condition</b>	Store vial at 4° C before opening. DO NOT FREEZE. This product is stable at 4° C as an undiluted liquid. Dilute only prior to immediate use. Freezing alkaline phosphatase conjugates will result in a substantial loss of enzymatic activity.
<b>Synonyms</b>	Rat IgG (H&L) alkaline Phosphatase conjugated Antibody, Gt-a-Rat IgG (H&L) alkaline Phosphatase conjugated antibody, Rat IgG (H&L) phosphatase alkaline conjugated Antibody in goat, Goat IgG phosphatase conjugated Secondary Antibody.
<b>Application Note</b>	Antibody Anti-Rat IgG (H&L) is suitable for immunoblotting (western or dot blot), ELISA, and immunohistochemistry assays requiring lot-to-lot consistency.
<b>Background</b>	Anti-Rat IgG (H&L) antibody generated in goat detects specifically rat IgG (H&L). This secondary antibody anti-Rat is ideal for investigators who routinely perform titration assays, western-blot, immunoprecipitation and more generally immunoassays.
<b>Purity And Specificity</b>	This product was prepared from monospecific antiserum by immunoaffinity chromatography using Rat IgG coupled to agarose beads followed by solid phase adsorption(s) to remove any unwanted reactivities. Assay by immunoelectrophoresis resulted in a single precipitin arc against anti-Alkaline Phosphatase (calf intestine), anti-Goat Serum, Rat IgG and Rat Serum. No reaction was observed against Bovine, Chicken, Goat, Guinea Pig, Hamster, Horse, Human, Mouse, Rabbit and Sheep Serum Proteins.
<b>Assay Dilutions</b>	User Optimized
<b>ELISA</b>	1:1,000 - 1:13,000
<b>Immunohistochemistry</b>	1:200 - 1:1,000
<b>WESTERN BLOT</b>	1:500 - 1:1,500
<b>IHC</b>	1:200 - 1:1,000
<b>OTHER ASSAYS</b>	User Optimized
<b>Expiration</b>	Expiration date is one (1) year from date of opening.
<b>Immunogen</b>	Anti-Rat IgG (H&L) was produced by repeated immunization with Rat IgG whole molecule in goat.
<b>Related Products</b>	

610-4302	Anti-MOUSE IgG (H&L) (RABBIT) Antibody Peroxidase Conjugated - 610-4302
611-1302	Anti-RABBIT IgG (H&L) (GOAT) Antibody Peroxidase Conjugated - 611-1302
B304	NORMAL GOAT SERUM (NGS) - B304
B501-0500	BLOTTO Immunoanalytical Grade (Non-Fat Dry Milk) - B501-0500

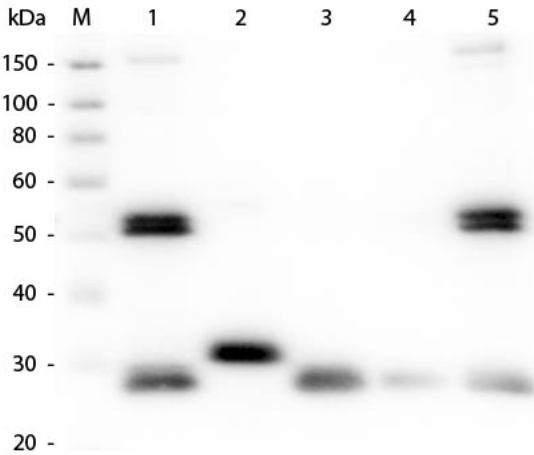
Related Links

Images

1  
Dot Blot of Goat anti-Rat IgG (H&L) Antibody Alkaline Phosphatase Conjugated Pre-Adsorbed. Antigen: Rat IgG Load: 1 µg Primary antibody: Goat anti-Rat IgG (H&L) Antibody Alkaline Phosphatase Conjugated Pre-Adsorbed 1:1,000 in MB-070 for 60 min at RT. Alkaline Phosphatase Substrate NBT-100 Neat for 30 seconds at RT. Block: MB-070 for 60 min at RT.



2  
Western Blot of Anti-Rat IgG (H&L) (GOAT) Antibody (Min X Bv Ch Gt GP Ham Hs Hu Ms Rb & Sh Serum Proteins) (p/n 612-101-120). Lane M: 3 µl Molecular Ladder. Lane 1: Rat IgG whole molecule (p/n 012-0102). Lane 2: Rat IgG F(c) Fragment (p/n 012-0103). Lane 3: Rat IgG Fab Fragment (p/n 012-0105). Lane 4: Rat IgM Whole Molecule (p/n 012-0107). Lane 5: Rat Serum (p/n D310-05). All samples were reduced. Load: 50 ng per lane. Block: MB-070 for 30 min at RT. Primary Antibody: Anti-Rat IgG (H&L) (GOAT) Antibody (Min X Bv Ch Gt GP Ham Hs Hu Ms Rb & Sh Serum Proteins) (p/n 612-101-120) 1:1,000 for 60 min at RT. Secondary Antibody: Anti-Goat IgG (DONKEY) Peroxidase Conjugated Antibody (p/n CUST10) 1:40,000 in MB-070 for 30 min at RT. Predicted/Observed Size: 25 and 55 kDa for Rat IgG and Serum, 25 kDa for F(c) and Fab, 78 and 25 kDa for IgM. Rat F(c) migrates slightly higher.



Disclaimer

This product is for research use only and is not intended for therapeutic or diagnostic applications. Please contact a technical service representative for more information. All products of animal origin manufactured by Rockland Immunochemicals are derived from starting materials of North American origin. Collection was performed in United States Department of Agriculture (USDA) inspected facilities and all materials have been inspected and certified to be free of disease and suitable for exportation. All properties listed are typical characteristics and are not specifications. All suggestions and data are offered in good faith but without guarantee as conditions and methods of use of our products are beyond our control. All claims must be made within 30 days following the date of delivery. The prospective user must determine the suitability of our materials before adopting them on a commercial scale. Suggested uses of our products are not recommendations to use our products in violation of any patent or as a license under any patent of Rockland Immunochemicals, Inc. If you require a commercial license to use this material and do not have one, then return this material, unopened to: Rockland Inc., P.O. BOX 5199, Limerick, Pennsylvania, USA.