

## Anti-Cybr (RABBIT) Antibody - 100-401-A23

**Code:** 100-401-A23

**Size:** 100 µg

**Product Description:** Anti-Cybr (RABBIT) Antibody - 100-401-A23

**PhysicalState:** Lyophilized

<b>Label</b>	Unconjugated
<b>Host</b>	Rabbit
<b>Gene Name</b>	CYTIP
<b>Species Reactivity</b>	mouse, rat, human
<b>Buffer</b>	0.02 M Potassium Phosphate, 0.15 M Sodium Chloride, pH 7.2
<b>Stabilizer</b>	None
<b>Preservative</b>	0.01% (w/v) Sodium Azide
<b>Storage Condition</b>	Store PSCDBP antibody / Anti-Cybr at 4° C prior to restoration. For extended storage aliquot contents and freeze at -20° C or below. Avoid cycles of freezing and thawing. Centrifuge product if not completely clear after standing at room temperature. This product is stable for several weeks at 4° C as an undiluted liquid. Dilute only prior to immediate use.
<b>Synonyms</b>	Cytohesin binder and regulator antibody, Cytohesin-binding protein HE antibody, Cytohesin-interacting protein antibody, Pleckstrin Homology Sec7 and Coiled-Coil Domains Binding Protein antibody, B31 antibody, PSCDBP antibody
<b>Application Note</b>	This antibody has been tested for use in ELISA and immunoprecipitation. Specific conditions for reactivity should be optimized by the end user. Expect a band approximately 40 kDa in size corresponding to Cybr by western blotting after IP in the appropriate cell lysate or extract. To date, this antibody has not shown direct detection of endogenous or over-expressed Cybr protein, but is capable of immunoprecipitating the antigen from lysates. It is possible, but has not yet been confirmed, that this antibody recognizes a conformational epitope.
<b>Background</b>	This antibody is designed, produced, and validated as part of a collaboration between Rockland and the National Cancer Institute (NCI) and is suitable for Cancer, Immunology and Nuclear Signaling research. Cybr (Pscdbp) is a new scaffold protein with significant homology to Tamalin. It contains a PDZ binding domain and a coiled-coil domain. Cybr is highly expressed in the immune system, and its expression seems to be common to nearly all immune cell populations (T cells, B cells, NK Macrophages, dendritic cells). Other organs/tissues in which Cybr is expressed include lung, kidney, intestine and testes. Cybr may play an important in vivo role in cell migration, especially when modulated by pro-inflammatory cytokines. Research Area is Chromatin, Immunology, Neuroscience, Signal Transduction
<b>Purity And Specificity</b>	This Cybr antibody is directed against mouse Cybr. The product is delipidated and defibrinated antiserum. A BLAST analysis was used to suggest cross-reactivity with Cybr from mouse and rat based on a 100% homology with the immunizing sequence. Reactivity against homologues from other sources is not known.
<b>ELISA</b>	1:5,000 - 1:20,000
<b>WESTERN BLOT</b>	1:1,000 - 1:10,000
<b>Expiration</b>	Expiration date is one (1) year from date of opening.
<b>Immunogen</b>	PSCDBP antibody was prepared from whole rabbit serum produced by repeated immunizations with a synthetic peptide corresponding to a region in the C-terminal portion of mouse Cybr.
<b>General Reference</b>	<p>Coppola,V., Barrick,C.A., Bobisse,S., Rodriguez-Galan,M.C., Pivetta,M., Reynolds,D., Howard,O.M., Palko,M.E., Esteban,P.F., Young,H.A., Rosato,A. and Tessarollo,L. (2006) The scaffold protein Cybr is required for cytokine-modulated trafficking of leukocytes in vivo. Mol. Cell. Biol. 26 (14), 5249-5258.</p> <p>Watford,W.T., Li,D., Agnello,D., Durant,L., Yamaoka,K., Yao,Z.J., Ahn,H.J., Cheng,T.P., Hofmann,S.R., Cogliati,T., Chen,A., Hissong,B.D., Husa,M.R., Schwartzberg,P., O'Shea,J.J. and Gadina,M. (2006) Cytohesin binder and regulator (cybr) is not essential for T- and dendritic-cell activation and differentiation. Mol. Cell. Biol. 26 (17), 6623-6632.</p> <p>Boehm,T., Hofer,S., Winklehner,P., Kellersch,B., Geiger,C., Trockenbacher,A., Neyer,S., Fiegl,H., Ebner,S., Ivarsson,L., Schneider,R., Kremmer,E., Heufler,C. and Kolanus,W. (2003) Attenuation of cell adhesion in lymphocytes is regulated by CYTIP, a protein which mediates signal complex sequestration. EMBO J. 22 (5), 1014-1024.</p> <p>Kitano,J., Kimura,K., Yamazaki,Y., Soda,T., Shigemoto,R., Nakajima,Y. and Nakanishi,S. (2002) Tamalin, a PDZ domain-containing protein, links a protein complex formation of group 1 metabotropic glutamate receptors and the guanine nucleotide exchange factor cytohesins. J. Neurosci. 22 (4), 1280-1289.</p>

USDA Certification: All products of animal origin manufactured by Rockland Immunochemicals are derived from starting materials of North American origin. Collection was performed in United States Department of Agriculture (USDA) inspected facilities and all materials have been inspected and certified to be free of disease and suitable for exportation.

Coppola,V., Barrick,C.A., Bobisse,S., Rodriguez-Galan,M.C., Pivetta,M., Reynolds,D., Howard,O.M., Palko,M.E., Esteban,P.F., Young,H.A., Rosato,A. and Tessarollo,L. (2006) The scaffold protein Cybr is required for cytokine-modulated trafficking of leukocytes in vivo. Mol. Cell. Biol. 26 (14), 5249-5258.

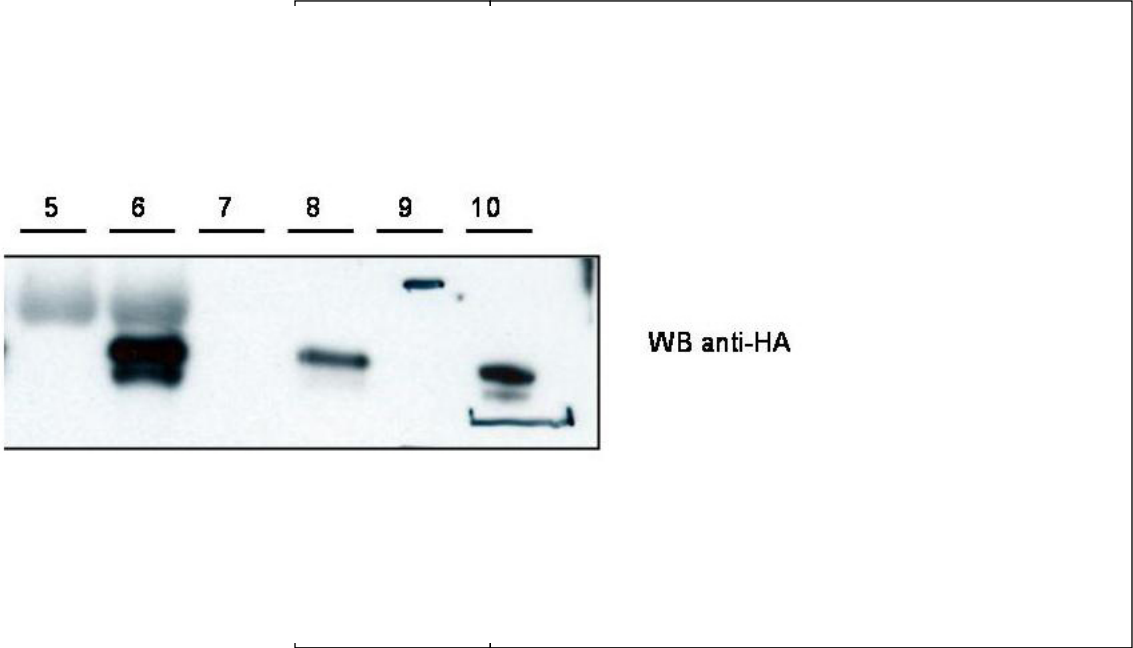
Related Products

200-301-268	Anti-AKT pS473 (MOUSE) Monoclonal Antibody - 200-301-268
610-4302	Anti-MOUSE IgG (H&L) (RABBIT) Antibody Peroxidase Conjugated - 610-4302
611-1302	Anti-RABBIT IgG (H&L) (GOAT) Antibody Peroxidase Conjugated - 611-1302
B304	NORMAL GOAT SERUM (NGS) - B304

Related Links

Images

1 Western blot using Rockland's anti-Cybr antibody shows detection of recombinant Cybr using anti-HA tag antibody after immunoprecipitation using anti-Cybr. Lane 5 contains lysate from control HEK293 cells. Lane 6 shows IP/WB of HEK293 cells expressing Cybr-HA. Lane 7 and 8 are loaded similarly to lanes 5 and 6 but were immunoprecipitated with anti-HA. Lane 9 contains marker. Lane 10 contains purified CybrHA. Personal Communication, V. Coppola, NCI, Bethesda, MD.



Disclaimer

This product is for research use only and is not intended for therapeutic or diagnostic applications. Please contact a technical service representative for more information. All products of animal origin manufactured by Rockland Immunochemicals are derived from starting materials of North American origin. Collection was performed in United States Department of Agriculture (USDA) inspected facilities and all materials have been inspected and certified to be free of disease and suitable for exportation. All properties listed are typical characteristics and are not specifications. All suggestions and data are offered in good faith but without guarantee as conditions and methods of use of our products are beyond our control. All claims must be made within 30 days following the date of delivery. The prospective user must determine the suitability of our materials before adopting them on a commercial scale. Suggested uses of our products are not recommendations to use our products in violation of any patent or as a license under any patent of Rockland Immunochemicals, Inc. If you require a commercial license to use this material and do not have one, then return this material, unopened to: Rockland Inc., P.O. BOX 5199, Limerick, Pennsylvania, USA.