



Anti-Cyclin B1 (RABBIT) Antibody - 100-401-152

Code: 100-401-152

Size: 100 µL

Product Description: Anti-Cyclin B1 (RABBIT) Antibody - 100-401-152

Concentration: 80 mg/mL by Refractometry

PhysicalState: Liquid (sterile filtered)

Label	Unconjugated
Host	Rabbit
Gene Name	CCNB1
Species Reactivity	human, rat, mouse
Buffer	None
Stabilizer	None
Preservative	0.01% (w/v) Sodium Azide
Storage Condition	Store vial at -20° C prior to opening. Aliquot contents and freeze at -20° C or below for extended storage. Avoid cycles of freezing and thawing. Centrifuge product if not completely clear after standing at room temperature. This product is stable for several weeks at 4° C as an undiluted liquid. Dilute only prior to immediate use.
Synonyms	G2/mitotic-specific cyclin-B1
Application Note	This antibody is suitable for use in ELISA, immunoblotting, immunoprecipitation and other immuno-logical methods requiring high titer and specificity. Specific conditions for reactivity and detection of Cyclin B ₁ should be optimized by the end user. Expect a band approximately 55-66 kDa in size corresponding to Cyclin B ₁ by western blotting in the appropriate cell lysate or extract. H23 cells may be used as a positive control.
Background	The protein encoded by this gene is a regulatory protein involved in mitosis. The gene product forms a complex with p34 (cdc2) to form the maturation-promoting factor (MPF). Two alternative transcripts have been found, a constitutively expressed transcript and a cell cycle-regulated transcript that is expressed predominantly during G2/M phase. The different transcripts result from the use of alternate transcription initiation sites.
Purity And Specificity	This product was prepared from monospecific antiserum by delipidation and defibrination. Antiserum will specifically react with a 55-62 kDa Cyclin B1 protein from human, rat and mouse tissue. No reaction was observed against other related cyclins. Cross reactivity with Cyclin B1 from other species may also occur.
Assay Dilutions	User Optimized
ELISA	1:2,000 - 1:10,000
WESTERN BLOT	1:500 - 1:1,000
OTHER ASSAYS	User Optimized
Expiration	Expiration date is one (1) year from date of opening.
Immunogen	Anti-Cyclin B1 antibody was produced by repeated immunizations of full length fusion protein corresponding to the human gene.
General Reference	Giordano, A., Whyte, P., Harlow, E., Franza, B., Beach D. and Draetta, G. (1989) A 60 kd cdc-2 associated polypeptide complexes with the E1A proteins of adenovirus-infected cells. Cell 58; 981-990. Pines, J. and Hunter, T. (1990) Human cyclin A is adenovirus E1A-associated protein p60 and behaves differently from cyclin B. Nature 346; 760-763.

Related Products

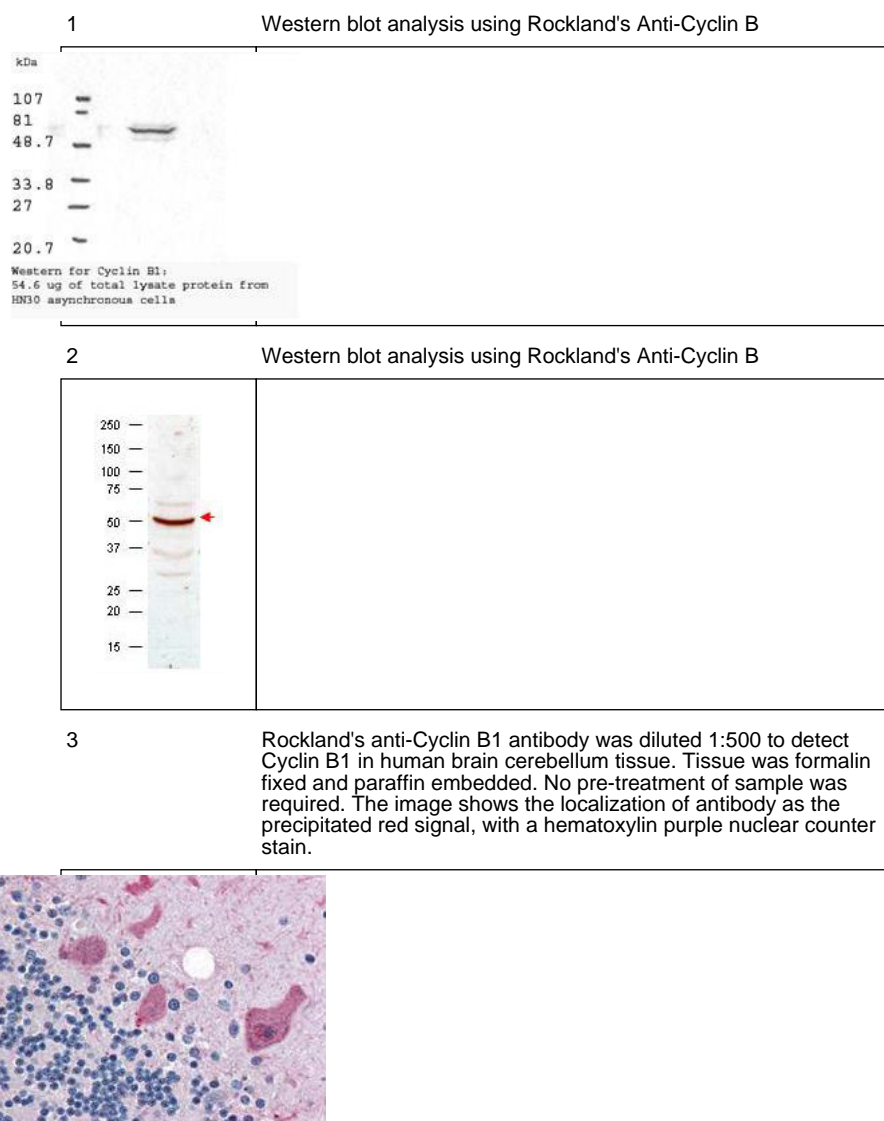
100-401-153	Anti-Cyclin D1 (RABBIT) Antibody - 100-401-153
600-401-398	Anti-ATM Protein Kinase S1981 (RABBIT) Antibody - 600-401-398
611-1302	Anti-RABBIT IgG (H&L) (GOAT) Antibody Peroxidase Conjugated - 611-1302

FENTOMAX-110 Chemiluminescent FemtoMax™ Super Sensitive HRP Substrate for Microwell and/or Membrane (2 component system) - FENTOMAX-110

Related Links

UniProtKB	http://www.uniprot.org/uniprot/P14635
NCBI	http://www.ncbi.nlm.nih.gov/protein/14327896
NCBI - 14327896	http://www.ncbi.nlm.nih.gov/protein/14327896
UniProt - P14635	http://www.uniprot.org/uniprot/P14635
Gene ID - 891	http://www.ncbi.nlm.nih.gov/gene/891

Images



Disclaimer

This product is for research use only and is not intended for therapeutic or diagnostic applications. Please contact a technical service representative for more information. All products of animal origin manufactured by Rockland Immunochemicals are derived from starting materials of North American origin. Collection was performed in United States Department of Agriculture (USDA) inspected facilities and all materials have been inspected and certified to be free of disease and suitable for exportation. All properties listed are typical characteristics and are not specifications. All suggestions and data are offered in good faith but without guarantee as conditions and methods of use of our products are beyond our control. All claims must be made within 30 days following the date of delivery. The prospective user must determine the suitability of our materials before adopting them on a commercial scale. Suggested uses of our products are not recommendations to use our products in violation of any patent or as a license under any patent of Rockland Immunochemicals, Inc. If you require a commercial license to use this material and do not have one, then return this material, unopened to: Rockland Inc., P.O. BOX 5199, Limerick, Pennsylvania, USA.