

Anti-PLASMINOGEN (Human Plasma) (GOAT) Antibody - 100-101-208

Code: 100-101-208

Size: 2 mL

Product Description: Anti-PLASMINOGEN (Human Plasma) (GOAT) Antibody - 100-101-208

Concentration: 90 mg/mL by Refractometry

PhysicalState: Lyophilized

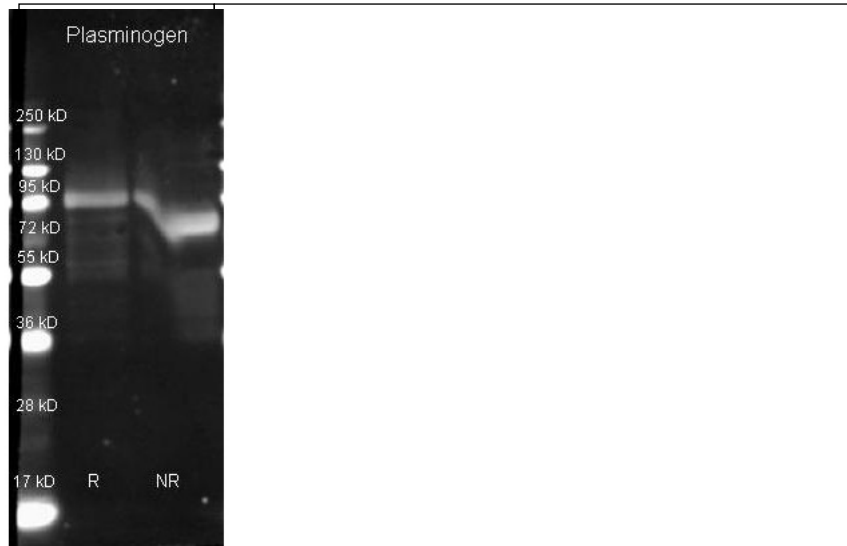
Label	Unconjugated
Host	Goat
Gene Name	PLG
Species Reactivity	human
Buffer	0.02 M Potassium Phosphate, 0.15 M Sodium Chloride, pH 7.2
Stabilizer	None
Preservative	0.01% (w/v) Sodium Azide
Storage Condition	Store vial at 4° C prior to restoration. For extended storage aliquot contents and freeze at -20° C or below. Avoid cycles of freezing and thawing. Centrifuge product if not completely clear after standing at room temperature. This product is stable for several weeks at 4° C as an undiluted liquid. Dilute only prior to immediate use.
Synonyms	Angiostatin antibody, DKFZp779M0222 antibody, Microplasmin antibody, Plasmin antibody, Plasmin heavy chain A antibody, Plasmin light chain B antibody, PLG antibody
Application Note	This product has been assayed against 1.0 ug of Plasminogen [Human Plasma] in a standard ELISA using Peroxidase conjugated Affinity Purified anti-Goat IgG [H&L] (Goat) code #611-1302 and (ABTS (2,2'-azino-bis-[3-ethylbenthiazoline-6-sulfonic acid]) code # ABTS-100 as a substrate for 30 minutes at room temperature. A working dilution of 1:3,000 to 1:12,000 of the reconstitution concentration is suggested for this product.
Purity And Specificity	This product was prepared from monospecific antiserum by a delipidation and defibrination. Assay by immunoelectrophoresis resulted in a single precipitin arc against purified and partially purified Plasminogen [Human Plasma]. Cross reactivity against Plasminogen from other sources is unknown.
Assay Dilutions	User Optimized
ELISA	1:20,000 - 1:100,000
WESTERN BLOT	1:2,000 - 1:10,000
OTHER ASSAYS	User Optimized
Expiration	Expiration date is one (1) year from date of opening.
Immunogen	Plasminogen [Human Plasma]
Related Products	
Related Links	

UniProtKB	http://www.uniprot.org/uniprot/P00747
NCBI - P00747.2	http://www.ncbi.nlm.nih.gov/protein/P00747.2
UniProt - P00747	http://www.uniprot.org/uniprot/P00747
Gene ID - 5340	http://www.ncbi.nlm.nih.gov/gene/5340

Images

1	Rockland Goat anti Plasminogen antibody (200-101-208 lot 6571) was used to detect Plasminogen under reducing (R) and non-reducing (NR) conditions. Reduced samples of purified target proteins contained 4% BME and were boiled for 5 minutes. Samples of ~1ug of protein per lane were run by SDS-PAGE. Protein was transferred to nitrocellulose and probed with 1:3000 dilution of primary antibody (ON 4 C in MB-070). Detection shown
---	--

was using Dylight 649 conjugated Donkey anti goat (605-743-125 lot 20834 1:10K in TBS/MB-070) 1 hr RT. Images were collected using the BioRad VersaDoc System.



Disclaimer

This product is for research use only and is not intended for therapeutic or diagnostic applications. Please contact a technical service representative for more information. All products of animal origin manufactured by Rockland Immunochemicals are derived from starting materials of North American origin. Collection was performed in United States Department of Agriculture (USDA) inspected facilities and all materials have been inspected and certified to be free of disease and suitable for exportation. All properties listed are typical characteristics and are not specifications. All suggestions and data are offered in good faith but without guarantee as conditions and methods of use of our products are beyond our control. All claims must be made within 30 days following the date of delivery. The prospective user must determine the suitability of our materials before adopting them on a commercial scale. Suggested uses of our products are not recommendations to use our products in violation of any patent or as a license under any patent of Rockland Immunochemicals, Inc. If you require a commercial license to use this material and do not have one, then return this material, unopened to: Rockland Inc., P.O. BOX 5199, Limerick, Pennsylvania, USA.