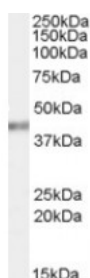


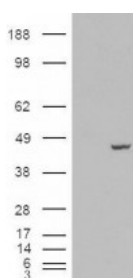


PCBP4 Antibody

CATALOG NUMBER: 46-143



Western Blot (0.03ug/ml) staining of HeLa cell lysate (35ug protein in RIPA buffer). Primary incubation was 1 hour. Detected by chemiluminescence.



HEK293 overexpressing PCBP4 and probed with antibody (mock transfection in first lane).

Specifications

SPECIES REACTIVITY:	Human
TESTED APPLICATIONS:	ELISA, WB
APPLICATIONS:	ELISA: antibody detection limit dilution 1:128000. Western Blot: Approx. 40kDa band observed in lysates of cell line HeLa (calculated MW of 41.4kDa according to NP_127502.1 and NP_127503.1). In transfected HEK293 transiently expressing PCBP4 a band of approx. 45kDa is observed. This band is not observed
POSITIVE CONTROL:	1) Cat. No. 1201 - HeLa Cell Lysate
SPECIFICITY:	This antibody is expected to recognise all reported isoforms (NP_065151.1, NP_127501.1, NP_127502.1 and NP_127503.1).
IMMUNOGEN:	PCBP4 antibody was raised against a 14 amino acid synthetic peptide near the C-Terminus of PCBP4.
HOST SPECIES:	Goat

Properties

PURIFICATION:	PCBP4 antibody was purified from goat serum by ammonium sulphate precipitation followed by antigen affinity chromatography using the immunizing peptide.
PHYSICAL STATE:	Liquid
BUFFER:	PCBP4 antibody is supplied in Tris saline, 0.02% sodium azide, pH 7.3 with 0.5% bovine serum albumin.
CONCENTRATION:	500 ug/mL
STORAGE CONDITIONS:	Aliquot and store at -20°C. Minimize freezing and thawing.
CLONALITY:	Polyclonal
CONJUGATE:	Unconjugated

Additional Info

ALTERNATE NAMES:	PCBP4, poly(rC) binding protein 4, LIP4, MCG10, LYST-interacting protein, RNA binding protein MCG10, alphaCP-4 protein, poly(rC)-binding protein 4, alpha CP-4, CBP
ACCESSION NO.:	NP_065151.1, NP_127501.1, NP_127502.1, NP_127503.1
PROTEIN GI NO.:	9966803

OFFICIAL SYMBOL:	PCBP4
GENE ID:	57060

Background

REFERENCES: 1) Pio R, Zudaire I, Pino I, Castano Z, Zabalegui N, Vicent S, Garcia-Amigot F, Otero MD, Lozano MD, Garcia-Foncillas J, Calasanz MJ, Montuenga LM. Alpha CP-4, encoded by a putative tumor suppressor gene at 3p21, but not its alternative splice variant alpha CP-4a, is underexpressed in lung cancer. Cancer Res. 2004 Jun 15;64(12):4171-9.

FOR RESEARCH USE ONLY

December 22, 2016