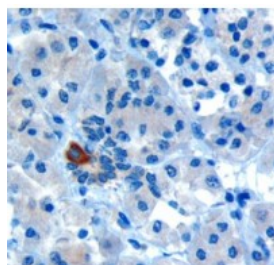


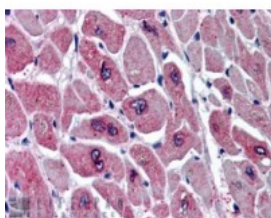


PAR6 alpha Antibody

CATALOG NUMBER: 46-130



Immunohistochemistry (10ug/ml) staining of paraffin embedded Human Pancreas. Microwaved antigen retrieval with Tris/EDTA buffer pH9, HRP-staining.



Immunohistochemistry (5ug/ml) staining of paraffin embedded Human Heart. Steamed antigen retrieval with citrate buffer pH 6, AP-staining.

Specifications

SPECIES REACTIVITY:	Human
TESTED APPLICATIONS:	ELISA, IHC-P
APPLICATIONS:	ELISA: antibody detection limit dilution 1:8000. Western Blot: Preliminary experiments gave no signal but low background in Human Brain and Pancreas extracts at up to 1ug/ml. Immunohistochemistry: In paraffin embedded Human Pancreas, shows strong cytoplasmic staining in rare cells of intralobular ducts. Recommended concentration, 10ug/ml. Also tested in paraffin embedded Human Heart where it shows speckled staining on myocar
POSITIVE CONTROL:	1) Cat. No. 1307 - Human Pancreas Tissue Lysate
SPECIFICITY:	This antibody is expected to recognise both reported isoforms (NP_058644.1; NP_001032358.1).
IMMUNOGEN:	PAR6 alpha antibody was raised against a 13 amino acid synthetic peptide near the C-Terminus of PAR6 alpha.
HOST SPECIES:	Goat

Properties

PURIFICATION:	PAR6 alpha antibody was purified from goat serum by ammonium sulphate precipitation followed by antigen affinity chromatography using the immunizing peptide.
PHYSICAL STATE:	Liquid
BUFFER:	PAR6 alpha antibody is supplied in Tris saline, 0.02% sodium azide, pH 7.3 with 0.5% bovine serum albumin.
CONCENTRATION:	500 ug/mL
STORAGE CONDITIONS:	Aliquot and store at -20°C. Minimize freezing and thawing.
CLONALITY:	Polyclonal
CONJUGATE:	Unconjugated

Additional Info

ALTERNATE NAMES:	PAR6A, PAR-6, TAX40, PAR-6A, TIP-40, PAR6alpha, par-6 partitioning defective 6 homolog alpha (C.elegans), Tax interaction protein 40, par-6 (partitioning defective 6, C.elegans) homolog alpha, PAR6A
ACCESSION NO.:	NP_058644

PROTEIN GI NO.: 8394417

OFFICIAL SYMBOL: PARD6A

GENE ID: 50855

Background

REFERENCES: 1) Johansson A, Driessens M, Aspenstrom P. The mammalian homologue of the *Caenorhabditis elegans* polarity protein PAR-6 is a binding partner for the Rho GTPases Cdc42 and Rac1. *J Cell Sci.* 2000 Sep;113 (Pt 18):3267-75.

FOR RESEARCH USE ONLY

December 22, 2016