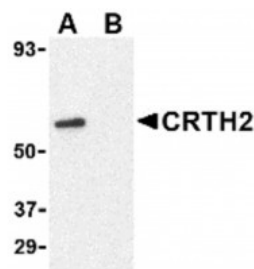


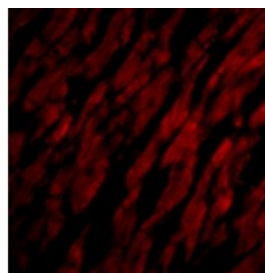


CRTH2 Antibody

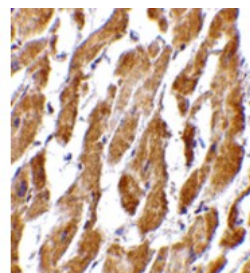
CATALOG NUMBER: 4027



Western blot analysis of CRTH2 in Jurkat cell lysate with CRTH2 antibody at 1 ug/mL in (A) the absence and (B) presence of blocking peptide.



Immunofluorescence of CRTH2 in Human Heart tissue with CRTH2 antibody at 20 ug/mL.



Immunohistochemistry of CRTH2 in human heart tissue with CRTH2 antibody at 2.5 ug/mL.

Specifications

SPECIES REACTIVITY:	Human, Mouse, Rat
TESTED APPLICATIONS:	ELISA, IF, IHC-P, WB
APPLICATIONS:	CRTH2 antibody can be used for detection of CRTH2 by Western blot at 1 ug/mL. Antibody can also be used for immunohistochemistry starting at 2.5 ug/mL. For immunofluorescence start at 20 ug/mL.
USER NOTE:	Optimal dilutions for each application to be determined by the researcher.
POSITIVE CONTROL:	1) Cat. No. 1205 - Jurkat Cell Lysate 2) Cat. No. 1301 - Human Heart Tissue Lysate
PREDICTED MOLECULAR WEIGHT:	Predicted: 43, 55 kDa Observed: 60 kDa
SPECIFICITY:	At least two different isoforms of CRTH2 are known to exist; this antibody will detect both isoforms.
IMMUNOGEN:	CRTH2 antibody was raised against a 18 amino acid synthetic peptide from near the amino terminus of human CRTH2. The immunogen is located within the first 50 amino acids of CRTH2.
HOST SPECIES:	Rabbit

Properties

PURIFICATION:	CRTH2 Antibody is affinity chromatography purified via peptide column.
PHYSICAL STATE:	Liquid
BUFFER:	CRTH2 Antibody is supplied in PBS containing 0.02% sodium azide.
CONCENTRATION:	1 mg/mL
STORAGE CONDITIONS:	CRTH2 antibody can be stored at 4°C for three months and -20°C, stable for up to one year. As with all antibodies care should be taken to avoid repeated freeze thaw cycles. Antibodies should not be exposed to prolonged high temperatures.
CLONALITY:	Polyclonal

ISOTYPE:	IgG
CONJUGATE:	Unconjugated
Additional Info	
ALTERNATE NAMES:	CRTH2 Antibody: DP2, DL1R, CD294, CRTH2, GPR44, Prostaglandin D2 receptor 2, Chemoattractant receptor-homologous molecule expressed on Th2 cells
ACCESSION NO.:	NP_004769
PROTEIN GI NO.:	153791424
OFFICIAL SYMBOL:	GPR44
GENE ID:	11251

Background

BACKGROUND:	CRTH2 Antibody: The chemoattractant receptor-homologous molecule expressed on Th2 cells (CRTH2) is a recently identified receptor for the prostaglandin D2 (PGD2) in addition to the classic prostaglandin D receptor. CRTH2 is expressed on Th2 cells and eosinophils and mediates chemotaxis of these cells to PGD2 and is thus thought to be a key receptor mediating eosinophil and Th2 recruitment during allergic responses. However, CRTH2-null mice showed enhanced eosinophil recruitment into the lung consistent with observations that the CRTH2-null mice produced significantly higher amounts of interleukin-5 (IL-5) and IL-3. This suggests that CRTH2 plays a nonredundant role in restricting eosinophilia and allergic response in vivo.
REFERENCES:	<p>1) Nagata K, Hirai K, Tanaka K, et al. CRTH2, an orphan receptor of T-helper-2-cells, is expressed on basophils and eosinophils and responds to mast cell-derived factor(s). FEBS Lett. 1999; 459:195-9.</p> <p>2) Shichijo M, Sugimoto H, Nagao K, et al. Chemoattractant receptor-homologous molecule expressed on Th2 cells activation in vivo increases blood leukocyte counts and its blockage abrogates 13,14-dihydro-15-keto-prostaglandin D2-induced eosinophilia in rats. J. Pharmacol. Exp. Ther. 2003; 307:518-25.</p> <p>3) Chevalier E, Stock J, Fisher T, et al. Cutting edge: chemoattractant receptor-homologous molecule expressed on Th2 cells plays a restricting role on IL-5 production and eosinophil recruitment. J. Immunol. 2005; 2056-60.</p>

FOR RESEARCH USE ONLY

December 12, 2016