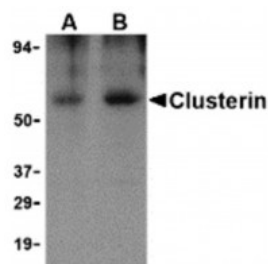


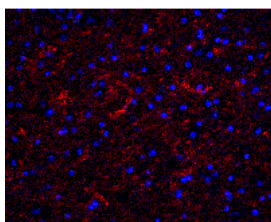


Clusterin Antibody

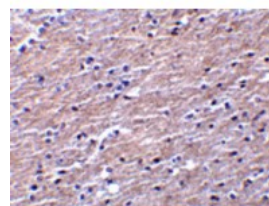
CATALOG NUMBER: 3856



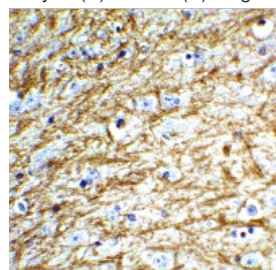
Western blot analysis of Clusterin in human brain tissue lysate with Clusterin antibody at (A) 0.5 and (B) 1 ug/mL.



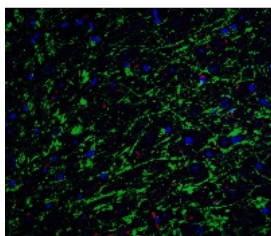
Immunofluorescence of Clusterin in human brain tissue with Clusterin antibody at 20 ug/mL.



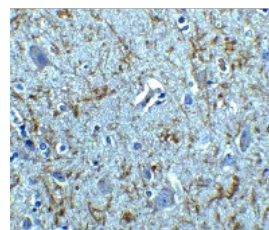
Immunohistochemistry of Clusterin in human brain tissue with Clusterin antibody at 10 ug/mL.



Immunohistochemistry of Clusterin in mouse brain tissue with Clusterin Antibody at 5 ug/mL.



Immunofluorescence of Clusterin in mouse brain tissue with Clusterin Antibody at 20 ug/mL.



Immunohistochemistry of Clusterin in human brain tissue with Clusterin antibody at 5 ug/mL.

Specifications

SPECIES REACTIVITY:	Human, Mouse
TESTED APPLICATIONS:	ELISA, IF, IHC-P, WB
APPLICATIONS:	Clusterin antibody can be used for the detection of Clusterin by Western blot at 0.5 - 1 ug/mL. Antibody can also be used for immunohistochemistry starting at 5 ug/mL. For immunofluorescence start at 20 ug/mL.
USER NOTE:	Optimal dilutions for each application to be determined by the researcher.
POSITIVE CONTROL:	1) Cat. No. 1303 - Human Brain Tissue Lysate
IMMUNOGEN:	Clusterin antibody was raised recombinant human Clusterin isoform 1.
HOST SPECIES:	Rabbit

Properties

PURIFICATION:	Clusterin Antibody is affinity chromatography purified via peptide column.
PHYSICAL STATE:	Liquid
BUFFER:	Clusterin Antibody is supplied in PBS containing 0.02% sodium azide.
CONCENTRATION:	1 mg/mL
STORAGE CONDITIONS:	Clusterin antibody can be stored at 4°C for three months and -20°C, stable for up to one year. As with all antibodies care should be taken to avoid repeated freeze thaw cycles. Antibodies should not be exposed to

prolonged high temperatures.

CLONALITY:	Polyclonal
ISOTYPE:	IgG
CONJUGATE:	Unconjugated

Additional Info

ALTERNATE NAMES:	Clusterin Antibody: CLI, AAG4, APOJ, CLU1, CLU2, KUB1, SGP2, APO-J, SGP-2, SP-40, TRPM2, TRPM-2, NA1/NA2, CLI, Clusterin, Aging-associated gene 4 protein, Apo-J
ACCESSION NO.:	NP_001822
PROTEIN GI NO.:	42716297
OFFICIAL SYMBOL:	CLU
GENE ID:	1191

Background

BACKGROUND: Clusterin Antibody: Clusterin, also known as Apolipoprotein J (ApoJ), is a ubiquitous multifunctional glycoprotein that can interact with a broad spectrum of molecules such as complement components, various receptors, and the Alzheimer's b-amyloid peptide. Clusterin expression is increased in Alzheimer's disease brain tissue and clusterin-immunoreactive amyloid plaques are found associated with phospho-tau-positive dystrophic neurites and it has been suggested that clusterin facilitates the conversion of diffuse b-amyloid deposits into amyloid and enhances tau phosphorylation in neurites around these plaques. Other reports show that clusterin expression is decreased in proliferating cells and is upregulated in quiescent and senescent cells, suggesting that it may also play a role in aging and tumorigenesis suppression. Clusterin exists in at least two distinct isoforms.

REFERENCES:	1) Calero M, Rostagno A, Frangione B, et al. Clusterin and Alzheimer's disease. Subcell. Biochem. 2005; 38:273-98.
	2) Martin-Rehrmann MD, Hoe HS, Capuani EM, et al. Association of apolipoprotein J-positive β -amyloid plaques with dystrophic neurites in Alzheimer's disease brain. Neurotox. Res. 2005; 7:231-42.
	3) Trougakos IP and Gonos ES. Clusterin/Apolipoprotein J in human aging and cancer. Int. J. Biochem. Cell Biol. 2002; 34:1430-48.
	4) Martinon F and Tschopp J. NLRs join TLRs as innate sensors of pathogens. TRENDS Imm. 2005; 26:447-54.

FOR RESEARCH USE ONLY

December 12, 2016