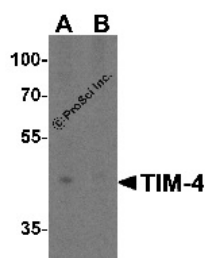


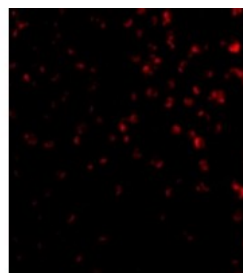


TIM-4 Antibody

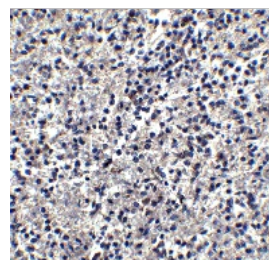
CATALOG NUMBER: 3815



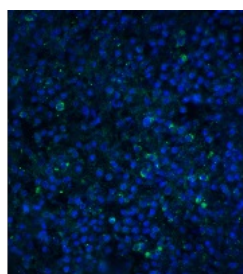
Western blot analysis of TIM-4 in RAW264.7 cell lysate with TIM-4 antibody at 2 ug/mL in (A) the absence and (B) the presence of blocking peptide.



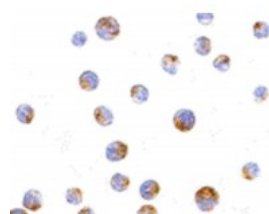
Immunofluorescence of TIM-4 in Jurkat cells with TIM-4 antibody at 20 ug/mL.



Immunohistochemistry of TIM-4 in human spleen tissue with TIM-4 antibody at 2.5 ug/mL.



Immunofluorescence of TIM-4 in human spleen tissue with TIM-4 antibody at 20 ug/mL.



Immunocytochemistry of TIM-4 in Jurkat cells with TIM-4 antibody at 10 ug/mL.

Specifications

SPECIES REACTIVITY:	Human, Mouse
TESTED APPLICATIONS:	ELISA, ICC, IF, IHC-P, WB
APPLICATIONS:	TIM-4 antibody can be used for the detection of TIM-4 by Western blot at 2 ug/mL. Antibody can also be used for immunocytochemistry starting at 10 ug/mL and Immunohistochemistry starting at 2.5 ug/mL. For immunofluorescence start at 20 ug/mL.
USER NOTE:	Optimal dilutions for each application to be determined by the researcher.
POSITIVE CONTROL:	1) Cat. No. 1205 - Jurkat Cell Lysate 2) Cat. No. 1283 - RAW264.7 Cell Lysate
PREDICTED MOLECULAR WEIGHT:	Observed: 45 kDa
SPECIFICITY:	At least four isoforms of TIM-4 are known to exist; this antibody will detect all four isoforms.
IMMUNOGEN:	TIM-4 antibody was raised against a 16 amino acid synthetic peptide from near the center of human TIM-4. The immunogen is located within amino acids 60 - 110 of TIM-4.
HOST SPECIES:	Rabbit

Properties

PURIFICATION:	TIM-4 Antibody is affinity chromatography purified via peptide column.
PHYSICAL STATE:	Liquid
BUFFER:	TIM-4 Antibody is supplied in PBS containing 0.02% sodium azide.
CONCENTRATION:	1 mg/mL
STORAGE CONDITIONS:	TIM-4 antibody can be stored at 4°C for three months and -20°C, stable for up to one year. As with all antibodies care should be taken to avoid repeated freeze thaw cycles. Antibodies should not be exposed to prolonged high temperatures.
CLONALITY:	Polyclonal
ISOTYPE:	IgG
CONJUGATE:	Unconjugated

Additional Info

ALTERNATE NAMES:	TIM-4 Antibody: TIM4, SMUCKLER, TIM4, T-cell immunoglobulin and mucin domain-containing protein 4, T-cell immunoglobulin mucin receptor 4, TIMD-4
ACCESSION NO.:	NP_612388
PROTEIN GI NO.:	226529863
OFFICIAL SYMBOL:	TIMD4
GENE ID:	91937

Background

BACKGROUND:	TIM-4 Antibody: The T cell immunoglobulin and mucin domain containing protein (TIM) family encodes cell surface receptors that are involved in the regulation of T helper (Th) -1 and -2 cell-mediated immunity. TIM-4, which is preferentially expressed on macrophages and dendritic cells, is the natural ligand of TIM-1, and this binding leads to T-cell expansion and cytokine production. Unlike other members of the TIM family, TIM-4 lacks a putative tyrosine phosphorylation signal sequence in its intracellular domain. The TIM-4 gene maps to a locus associated with predisposition to asthma in both mice and humans and with its connection to TIM-1-triggered Th2 responsiveness, may be considered as a candidate disease/predisposition gene for asthma.
REFERENCES:	1) Meyers JH, Sabatos CA, Chakravarti S, et al. The TIM family regulates autoimmune and allergic diseases. Trends Mol. Med. 2005; 11:362-9.
	2) Meyers JH, Chakravarti S, Schlesinger D, et al. TIM-4 is the ligand for TIM-1, and the TIM-1-TIM4 interaction regulates T cell proliferation. Nat. Immunol. 2005; 6:455-64.
	3) Kuchroo VK, Umetsu DT, DeKruyff RH, et al. The TIM gene family: emerging roles in immunity and disease. Nat. Rev. Immunol. 2003; 3:454-62.
	4) Shakhov AN, Rybtsov S, Tumanov AV, et al. SMUCKLER/TIM4 is a distinct member of TIM family expressed by stromal cells of secondary lymphoid tissues and associated with lymphotoxin signaling.

FOR RESEARCH USE ONLY

December 12, 2016