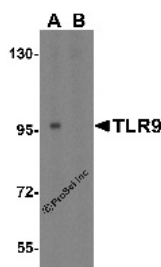


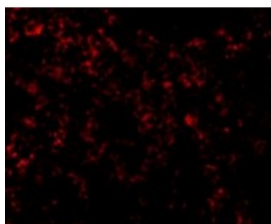


## TLR9 Antibody

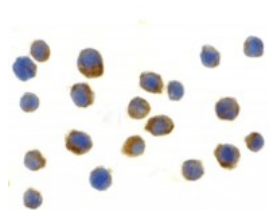
CATALOG NUMBER: 3739



Western blot analysis of TLR9 in Jurkat cell lysate with TLR9 antibody at 1 ug/mL in (A) the absence and (B) the presence of blocking peptide



Immunofluorescence of TLR9 in Mouse Spleen tissue with TLR9 antibody at 10 ug/mL.



Immunocytochemistry of TLR9 in Jurkat cells with TLR9 antibody at 2 ug/mL.

### Specifications

<b>SPECIES REACTIVITY:</b>	Human, Mouse, Rat
<b>TESTED APPLICATIONS:</b>	ELISA, ICC, IF, WB
<b>APPLICATIONS:</b>	TLR9 antibody can be used for detection of TLR9 by Western blot at 1 ug/mL. Antibody can also be used for immunocytochemistry starting at 2 ug/mL. For immunofluorescence start at 20 ug/mL.
<b>USER NOTE:</b>	Optimal dilutions for each application to be determined by the researcher.
<b>POSITIVE CONTROL:</b>	1) Cat. No. 1205 - Jurkat Cell Lysate
<b>PREDICTED MOLECULAR WEIGHT:</b>	Predicted: 104, 111 kDa Observed: 97 kDa
<b>SPECIFICITY:</b>	At least two isoforms of TLR9 are known to exist; this antibody will detect both isoforms. TLR9 antibody is predicted to not cross-react with other TLR proteins.
<b>IMMUNOGEN:</b>	TLR9 antibody was raised against a peptide corresponding to 15 amino acids near the center of human TLR9.  The immunogen is located within amino acids 840 - 890 of TLR9.
<b>HOST SPECIES:</b>	Rabbit

### Properties

<b>PURIFICATION:</b>	TLR9 Antibody is affinity chromatography purified via peptide column.
<b>PHYSICAL STATE:</b>	Liquid
<b>BUFFER:</b>	TLR9 Antibody is supplied in PBS containing 0.02% sodium azide.
<b>CONCENTRATION:</b>	1 mg/mL
<b>STORAGE CONDITIONS:</b>	TLR9 antibody can be stored at 4°C for three months and -20°C, stable for up to one year. As with all antibodies care should be taken to avoid repeated freeze thaw cycles. Antibodies should not be exposed to prolonged high temperatures.
<b>CLONALITY:</b>	Polyclonal
<b>ISOTYPE:</b>	IgG

**CONJUGATE:** Unconjugated

#### Additional Info

**ALTERNATE NAMES:** TLR9 Antibody: CD289, Toll-like receptor 9

**ACCESSION NO.:** AAH32713

**PROTEIN GI NO.:** 21595773

**OFFICIAL SYMBOL:** TLR9

**GENE ID:** 54106

#### Background

**BACKGROUND:** TLR9 Antibody: Toll-like receptors (TLRs) are evolutionarily conserved pattern-recognition molecules resembling the toll proteins that mediate antimicrobial responses in *Drosophila*. These proteins recognize different microbial products during infection and serve as an important link between the innate and adaptive immune responses. TLR9 forms a subfamily along with TLR7 and TLR8 that recognize viral RNA and CpG DNA sequences and are localized in intracellular acidic compartments such as the phagolysosome. Unlike other TLRs which act through adaptor molecules such as TOLLIP, TIRAP, TRIF, and MyD88 to activate various kinases and transcription factors to respond to potential infection, TLR9 is strictly dependent on MyD88.

**REFERENCES:**

- 1) Takeda K, Kaisho T, and Akira S. Toll-like receptors. *Annu. Rev. Immunol.*2003; 21:335-76.
- 2) Janeway CA Jr. and Medzhitov R. Innate immune recognition. *Annu. Rev. Immunol.*2002; 20:197-216.
- 3) Wagner H. The immunobiology of the TLR9 subfamily. *Trends Immunol.*2004; 381-6
- 4) Nishiya T and DeFranco AL. Ligand-regulated chimeric receptor approach reveals distinctive subcellular localization and signaling properties of the Toll-like receptors. *J. Biol. Chem.*2004; 279:19008-17.

**FOR RESEARCH USE ONLY**

December 12, 2016