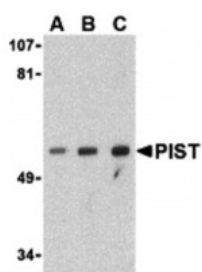


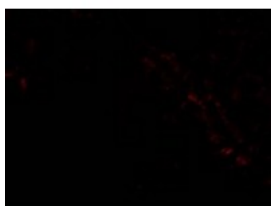


PIST Antibody

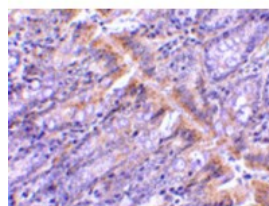
CATALOG NUMBER: 3633



Western blot analysis of PIST in PC-3 cell lysate with PIST antibody at (A) 1, (B) 2 and (C) 4 ug/mL.



Immunofluorescence of PIST in Rat Colon cells with PIST antibody at 20 ug/mL.



Immunohistochemistry of PIST in rat colon tissue with PIST antibody at 1 ug/mL.

Specifications

SPECIES REACTIVITY:	Human, Mouse
TESTED APPLICATIONS:	ELISA, IF, IHC-P, WB
APPLICATIONS:	PIST antibody can be used for the detection of PIST by Western blot at 1 - 4 ug/mL. Antibody can also be used for immunohistochemistry starting at 1 ug/mL. For immunofluorescence start at 20 ug/mL.
USER NOTE:	Optimal dilutions for each application to be determined by the researcher.
POSITIVE CONTROL:	1) Cat. No. 1216 - PC-3 Cell Lysate 2) Cat. No. 1472 - Rat Colon Lysate
IMMUNOGEN:	PIST antibody was raised against a 17 amino acid synthetic peptide from near the center of human PIST. The immunogen is located within amino acids 240 - 290 of PIST.
HOST SPECIES:	Rabbit

Properties

PURIFICATION:	PIST Antibody is affinity chromatography purified via peptide column.
PHYSICAL STATE:	Liquid
BUFFER:	PIST Antibody is supplied in PBS containing 0.02% sodium azide.
CONCENTRATION:	1 mg/mL
STORAGE CONDITIONS:	PIST antibody can be stored at 4°C for three months and -20°C, stable for up to one year. As with all antibodies care should be taken to avoid repeated freeze thaw cycles. Antibodies should not be exposed to prolonged high temperatures.
CLONALITY:	Polyclonal
ISOTYPE:	IgG
CONJUGATE:	Unconjugated

Additional Info

ALTERNATE NAMES:	PIST Antibody: CAL, FIG, PIST, GOPC1, dJ94G16.2, CAL, Golgi-associated PDZ and coiled-coil motif-containing protein, CFTR-associated ligand
-------------------------	---

ACCESSION NO.:	AAG00572
PROTEIN GI NO.:	9837431
OFFICIAL SYMBOL:	GOPC
GENE ID:	57120

Background

BACKGROUND: PIST Antibody: Autophagy, the process of bulk degradation of cellular proteins through an autophagosomic-lysosomal pathway is important for normal growth control and may be defective in tumor cells. It is involved in the preservation of cellular nutrients under starvation conditions as well as the normal turnover of cytosolic components and is negatively regulated by TOR (Target of rapamycin). PIST, a PDZ-containing protein, was discovered in a yeast two-hybrid system as a binding partner to Beclin-1, a Bcl-2-interacting protein homologous to the yeast autophagy gene *apg6*. Experiments with mutant PIST proteins lacking the PDZ domain showed that PIST interaction with Beclin-1 through its coiled-coil domain can modulate Beclin-1 activity and suggest that PIST interactions with other proteins through its PDZ domain may regulate the activity of PIST and Beclin-1.

REFERENCES:

- 1) Gozuacik D and Kimchi A. Autophagy as a cell death and tumor suppressor mechanism. *Oncogene*. 2004; 23:2891-906.
- 2) Kisen GO, Tessitore L, Costelli P, et al. Reduced autophagic activity in primary rat hepatocellular carcinoma and ascites hepatoma cells. *Carcinogenesis* 1993; 14:2501-5.
- 3) Kamada Y, Funakoshi T, Shintani T, et al. Tor-mediated induction of autophagy via Apg1 protein kinase complex. *J. Cell. Biol.* 2000; 150:1507-13.
- 4) Yu Z, Horton A, Bravin M, et al. A novel protein complex linking the $\delta 2$ glutamate receptor and autophagy: implications for neurodegeneration in Lurcher mice. *Neuron* 2002; 35:921-33.

FOR RESEARCH USE ONLY

December 12, 2016