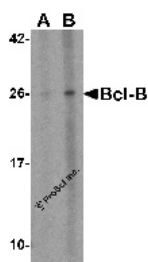


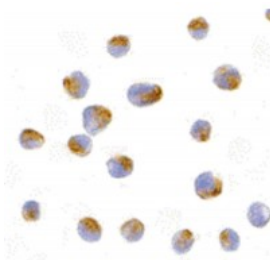


Bcl-B Antibody

CATALOG NUMBER: 3163



Western blot analysis of Bcl-B in Jurkat cell lysate with Bcl-B antibody at (A) 1 and (B) 2 ug/mL.



Immunocytochemistry of Bcl-B in Jurkat cells with Bcl-B antibody at 10 ug/mL.

Specifications

SPECIES REACTIVITY:	Human
TESTED APPLICATIONS:	ELISA, ICC, WB
APPLICATIONS:	Bcl-B antibody can be used for the detection of Bcl-B by Western blot at 1 - 2 ug/mL. Despite its predicted molecular weight, Bcl-B is often at higher molecular weights, presumably due to post-translational modifications. Antibody can also be used for immunocytochemistry starting at 10 ug/mL.
USER NOTE:	Optimal dilutions for each application to be determined by the researcher.
POSITIVE CONTROL:	1) Cat. No. 1205 - Jurkat Cell Lysate
PREDICTED MOLECULAR WEIGHT:	Predicted: 22 kDa Observed: 26 kDa
IMMUNOGEN:	Bcl-B antibody was raised against a 16 amino acid synthetic peptide from near the amino terminus of human Bcl-B. The immunogen is located within amino acids 90 - 140 of Bcl-B.
HOST SPECIES:	Rabbit

Properties

PURIFICATION:	Bcl-B Antibody is affinity chromatography purified via peptide column.
PHYSICAL STATE:	Liquid
BUFFER:	Bcl-B Antibody is supplied in PBS containing 0.02% sodium azide.
CONCENTRATION:	1 mg/mL
STORAGE CONDITIONS:	Bcl-B antibody can be stored at 4°C for three months and -20°C, stable for up to one year. As with all antibodies care should be taken to avoid repeated freeze thaw cycles. Antibodies should not be exposed to prolonged high temperatures.
CLONALITY:	Polyclonal
ISOTYPE:	IgG
CONJUGATE:	Unconjugated

Additional Info

ALTERNATE NAMES:	Bcl-B Antibody: Boo, Diva, BCL-B, BCLB, Bcl-2-like protein 10, Anti-apoptotic protein NrH, Bcl2-L-10
ACCESSION NO.:	NP_065129
PROTEIN GI NO.:	9966783
OFFICIAL SYMBOL:	BCL2L10
GENE ID:	10017

Background

BACKGROUND:	Bcl-B Antibody: Members in the Bcl-2 family are critical regulators of apoptosis by either inhibiting or promoting cell death. Bcl-B is a recently discovered anti-apoptotic member of the Bcl-2. Unlike the mouse homolog (also known as Diva/Boo) which is predominantly expressed in ovary and testis, the human Bcl-B protein is widely expressed. Also, the human Bcl-B functions by binding to and suppressing the apoptotic activity of Bax, whereas the mouse homolog binds Bak and also interacts with the apoptosis protein Apaf-1.
REFERENCES:	1) Cory S, Huang DCS, and Adams JM. The Bcl-2 family: roles in cell survival and oncogenesis. <i>Oncogene</i> 2003; 22:8590-607
	2) Heiser D, Labi V, Erlacher M, et al. The Bcl-2 protein family and its role in the development of neoplastic disease. <i>Exp. Geront.</i> 2004; 39:1125-35.
	3) Ke N, Godzik A, and Reed JC. Bcl-B: A novel Bcl-2 family member that differentially binds and regulates Bax and Bak. <i>J. Biol. Chem.</i> 2001; 276:12481-4.
	4) Song Q, Kuang Y, Dixit VM, et al. Boo, a negative regulator of cell death, interacts with Apaf-1. <i>EMBO J.</i> 1999; 18:167-78.

FOR RESEARCH USE ONLY

December 12, 2016