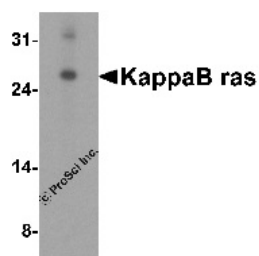


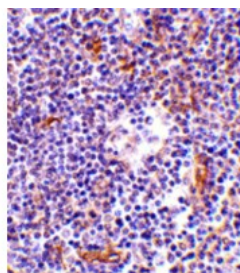


KappaB ras Antibody

CATALOG NUMBER: 2491



Western blot analysis of KappaB ras in RAW 264.7 cell lysate with KappaB ras antibody at 2 ug/mL.



Immunohistochemistry of KappaB ras in human lymph node tissue with KappaB ras antibody at 1 ug/mL.

Specifications

SPECIES REACTIVITY:	Human, Mouse, Rat
HOMOLOGY:	Predicted species reactivity based on immunogen sequence: Chicken: (94%)
TESTED APPLICATIONS:	ELISA, IHC-P, WB
APPLICATIONS:	KappaB ras antibody can be used for detection of KappaB ras by Western blot at 2 ug/mL. Antibody can also be used for immunohistochemistry starting at 1 ug/mL.
USER NOTE:	Optimal dilutions for each application to be determined by the researcher.
POSITIVE CONTROL:	1) Cat. No. 1283 – RAW 264.7 Cell Lysate 2) Cat. No. 1369 - Human Lymph Node Tissue Lysate
IMMUNOGEN:	KappaB ras antibody was raised against a 18 amino acid synthetic peptide from near the center of human KappaB ras 1. The immunogen is located within amino acids 80 - 130 of KappaB ras.
HOST SPECIES:	Rabbit

Properties

PURIFICATION:	KappaB ras Antibody is affinity chromatography purified via peptide column.
PHYSICAL STATE:	Liquid
BUFFER:	KappaB ras Antibody is supplied in PBS containing 0.02% sodium azide.
STORAGE CONDITIONS:	KappaB ras antibody can be stored at 4°C for three months and -20°C, stable for up to one year. As with all antibodies care should be taken to avoid repeated freeze thaw cycles. Antibodies should not be exposed to prolonged high temperatures.
CLONALITY:	Polyclonal
ISOTYPE:	IgG
CONJUGATE:	Unconjugated

Additional Info

ALTERNATE NAMES:	KappaB ras Antibody: KBRAS1, kappaB-Ras1, KBRAS1, NF-kappa-B inhibitor-interacting Ras-like protein 1, I-
-------------------------	---

ACCESSION NO.:	AAF34998
PROTEIN GI NO.:	7008402
OFFICIAL SYMBOL:	NKIRAS1
GENE ID:	28512

Background

BACKGROUND: KappaB ras Antibody: KappaB ras-1 (κ B-ras-1) and kappaB-ras-2 are two small proteins that similar to Ras-like small GTPases that associate with I κ B (I κ B), an inhibitor of the transcription factor NF- κ B. I κ B exists in two homologous forms, I κ B-alpha and I κ B-beta, although I κ B-beta contains a unique 47-amino acid region within its ankyrin domain. While inactive I κ B-alpha-NF- κ B complexes can shuttle in and out of the nucleus, I κ B-beta-NF- κ B complexes are retained exclusively in the cytoplasm. It is suggested that kappaB-ras proteins preferentially bind to the I κ B-beta form through this unique insert within the ankyrin region, thus modulating the cellular location of I κ B-beta and regulating the rate of degradation of I κ B-beta. This antibody detects both kappaB-ras1 and kappaB-ras2.

REFERENCES:

- 1) Fenwick C, Na SY, Voll RE, et al. A subclass of Ras proteins that regulate the degradation of IkappaB. Science 2000; 287:869-73.
- 2) Chen Y, Wu J and Ghosh G. KappaB-Ras binds to the unique insert within the ankyrin repeat domain of IkappaBbeta and regulates cytoplasmic retention of IkappaBbeta x NF-kappaB complexes. J. Biol. Chem.2003; 278:23101-6.

FOR RESEARCH USE ONLY

December 12, 2016