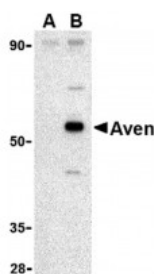


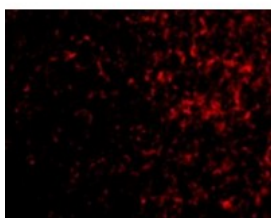


Aven Antibody

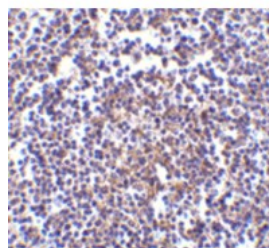
CATALOG NUMBER: 2413



Western blot analysis of Aven in Raji cell lysate with Aven antibody at 1 ug/mL in (A) the presence and (B) the absence of blocking peptide.



Immunofluorescence of AVEN in Human Spleen cells with AVEN antibody at 20 ug/mL.



Immunohistochemistry of Aven in human spleen tissue with Aven antibody at 5 ug/mL.

Specifications

SPECIES REACTIVITY:	Human, Mouse, Rat
TESTED APPLICATIONS:	ELISA, IF, IHC-P, WB
APPLICATIONS:	Aven antibody can be used for detection of Aven by Western blot at 1 ug/mL. Despite its predicted molecular weight, Aven often migrates at 55 kDa in SDS-PAGE. Antibody can also be used for immunohistochemistry starting at 5 ug/mL. For immunofluorescence start at 20 ug/mL.
USER NOTE:	Optimal dilutions for each application to be determined by the researcher.
POSITIVE CONTROL:	1) Cat. No. 1207 - Raji Cell Lysate 2) Cat. No. 1306 - Human Spleen Tissue Lysate
IMMUNOGEN:	Aven antibody was raised against a 14 amino acid synthetic peptide from near the carboxy terminus of human Aven. The immunogen is located within the last 50 amino acids of Aven.
HOST SPECIES:	Rabbit

Properties

PURIFICATION:	Aven Antibody is affinity chromatography purified via peptide column.
PHYSICAL STATE:	Liquid
BUFFER:	Aven Antibody is supplied in PBS containing 0.02% sodium azide.
STORAGE CONDITIONS:	Aven antibody can be stored at 4°C for three months and -20°C, stable for up to one year. As with all antibodies care should be taken to avoid repeated freeze thaw cycles. Antibodies should not be exposed to prolonged high temperatures.
CLONALITY:	Polyclonal
ISOTYPE:	IgG
CONJUGATE:	Unconjugated

Additional Info

ALTERNATE NAMES:	Aven Antibody: PDCD12, Cell death regulator Aven
ACCESSION NO.:	NP_065104
PROTEIN GI NO.:	9966841
OFFICIAL SYMBOL:	AVEN
GENE ID:	57099

Background

BACKGROUND: Aven Antibody: Apoptosis plays a major role in normal organism development, tissue homeostasis, and removal of damaged cells. Disruption of this process has been implicated in a variety of diseases such as cancer. Aven is a recently discovered protein that blocks apoptosis induced by Apaf-1 and caspase-9. It is thought that Aven functions by binding to Bcl-xL, an antiapoptotic member of the Bcl-2 family, and to Apaf-1, possibly interfering with the ability of Apaf-1 to self-associate, suggesting that Aven impedes Apaf-1-mediated caspase activation. Higher levels of Aven mRNA are seen in patients with acute leukemia than in control patients, suggesting that Aven may be useful as a prognostic indicator in leukemia patients.

REFERENCES:

- 1) Lockshin RA, Osborne B, and Zakeri Z. Cell death in the third millennium. *Cell Death Differ.* 2000; 7:2-7.
- 2) Chau BN, Cheng EH-Y, Kerr DA, et al. Aven, a novel inhibitor of caspase activation. Binds Bcl-xL and Apaf-1. *Mol. Cell* 2000; 6:31-40.
- 3) Paydas S, Tanriverdi K, Yavuz S, et al. Survivin and aven: two distinct antiapoptotic signals in acute leukemias. *Ann. Oncology* 2003; 14:1045-50.

FOR RESEARCH USE ONLY

December 12, 2016