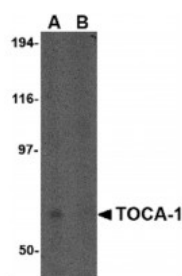


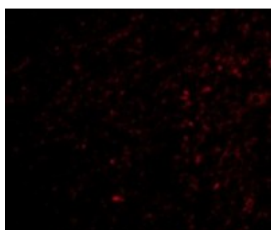


TOCA-1 Antibody

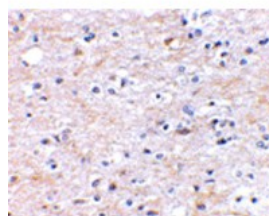
CATALOG NUMBER: 4375



Western blot analysis of TOCA-1 in human brain tissue lysate in (A) the absence and (B) the presence of blocking peptide with TOCA-1 antibody at 0.5 ug/mL.



Immunofluorescence of TOCA-1 in Human Brain cells with TOCA-1 antibody at 20 ug/mL.



Immunohistochemical staining of human brain tissue using TOCA-1 antibody at 2.5 ug/mL.

Specifications

SPECIES REACTIVITY:	Human, Mouse, Rat
TESTED APPLICATIONS:	ELISA, IF, IHC-P, WB
APPLICATIONS:	TOCA-1 antibody can be used for detection of TOCA-1 by Western blot at 0.5 ug/mL. Antibody can also be used for immunohistochemistry starting at 2.5 ug/mL. For immunofluorescence start at 20 ug/mL.
USER NOTE:	Optimal dilutions for each application to be determined by the researcher.
POSITIVE CONTROL:	1) Cat. No. 1303 - Human Brain Tissue Lysate
IMMUNOGEN:	TOCA-1 antibody was raised against a 15 amino acid synthetic peptide near the amino terminus of the human TOCA-1. The immunogen is located within amino acids 40 - 90 of TOCA-1.
HOST SPECIES:	Rabbit

Properties

PURIFICATION:	TOCA-1 Antibody is affinity chromatography purified via peptide column.
PHYSICAL STATE:	Liquid
BUFFER:	TOCA-1 Antibody is supplied in PBS containing 0.02% sodium azide.
CONCENTRATION:	1 mg/mL
STORAGE CONDITIONS:	TOCA-1 antibody can be stored at 4°C for three months and -20°C, stable for up to one year. As with all antibodies care should be taken to avoid repeated freeze thaw cycles. Antibodies should not be exposed to prolonged high temperatures.
CLONALITY:	Polyclonal
ISOTYPE:	IgG
CONJUGATE:	Unconjugated

Additional Info

ALTERNATE NAMES:	TOCA-1 Antibody: TOCA1, C1orf39, TOCA1, Formin-binding protein 1-like, Transducer of Cdc42-dependent
-------------------------	------------------------------------------------------------------------------------------------------

actin assembly protein 1, Toca-1

ACCESSION NO.: NP_001020119

PROTEIN GI NO.: 68348709

OFFICIAL SYMBOL: FNBP1L

GENE ID: 54874

Background

BACKGROUND: TOCA-1 Antibody: Actin reorganization is important for the regulation of neuronal morphology. A protein involved in this process, the transducer of cdc42-dependent actin assembly 1 (TOCA-1) protein, a member of the evolutionarily conserved pombe CDC15 homology (PCH) protein family, is an essential component of the Cdc42 pathway. TOCA-1 binds both N-WASP and Cdc42 and is essential for Cdc42- and PIP2-induced actin polymerization, suggesting that TOCA-1 mediates Cdc42-dependent actin nucleation by activating the N-WASP-WIP complex. Decreased expression of TOCA-1 significantly enhances neurite elongation in PC-12 cells; its overexpression in the same cells suppresses neurite elongation. It has been suggested that TOCA-1 negatively regulates axon branching by regulating membrane trafficking by regulating membrane trafficking through the F-BAR/EFC domain. Multiple isoforms of TOCA-1 are known to exist.

REFERENCES: 1) Ho H-Y H, Rohatgi R, Lebensohn AM, et al. Toca-1 mediates Cdc42-dependent actin nucleation by activating the N-WASP-WIP complex. Cell 2004; 118:203-16.

2) Kakimoto T, Katoh H, and Negishi M. Regulation of neuronal morphology by Toca-1, an F-BAR/EFC protein that induces plasma membrane invagination. J. Biol. Chem. 2006; 281:29042-43.

FOR RESEARCH USE ONLY

December 13, 2016