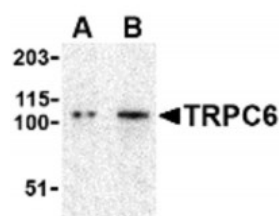


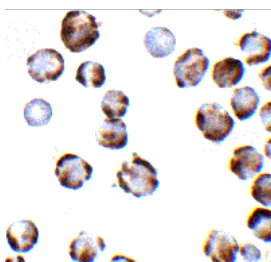


TRPC6 Antibody

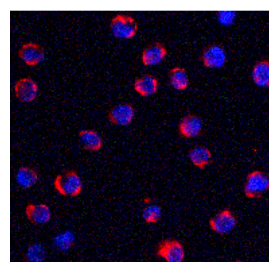
CATALOG NUMBER: 3899



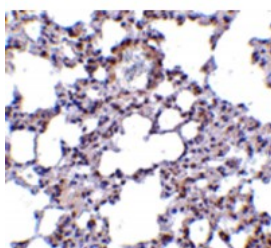
Western blot analysis of TRPC6 in K562 cell lysate with TRPC6 antibody at (A) 0.5 and (B) 1 ug/mL.



Immunocytochemistry of TRPC6 in K562 cells with TRPC6 antibody at 2 ug/mL.



Immunofluorescence of TRPC6 in K562 cells with TRPC6 antibody at 5 ug/mL.



Immunohistochemistry of TRPC6 in mouse lung tissue with TRPC6 antibody at 10 ug/mL.

Specifications

SPECIES REACTIVITY:	Human, Mouse
TESTED APPLICATIONS:	ELISA, IF, IHC-P, WB
APPLICATIONS:	TRPC6 antibody can be used for the detection of TRPC6 by Western blot at 0.5 - 1 ug/mL. Antibody can also be used for Immunohistochemistry starting at 10 ug/mL and Immunocytochemistry starting at 2 ug/mL . For immunofluorescence start at 5 ug/mL.
USER NOTE:	Optimal dilutions for each application to be determined by the researcher.
POSITIVE CONTROL:	1) Cat. No. 1204 - K562 Cell Lysate 2) Cat. No. 1402 - Mouse Lung Tissue Lysate
SPECIFICITY:	This antibody may cross-react with TRPC3.
IMMUNOGEN:	TRPC6 antibody was raised against a 14 amino acid synthetic peptide from near the amino terminus of human TRPC6. The immunogen is located within amino acids 50 - 100 of TRPC6.
HOST SPECIES:	Rabbit

Properties

PURIFICATION:	TRPC6 Antibody is affinity chromatography purified via peptide column.
----------------------	--

PHYSICAL STATE:	Liquid
BUFFER:	TRPC6 Antibody is supplied in PBS containing 0.02% sodium azide.
CONCENTRATION:	1 mg/mL
STORAGE CONDITIONS:	TRPC6 antibody can be stored at 4°C for three months and -20°C, stable for up to one year. As with all antibodies care should be taken to avoid repeated freeze thaw cycles. Antibodies should not be exposed to prolonged high temperatures.
CLONALITY:	Polyclonal
ISOTYPE:	IgG
CONJUGATE:	Unconjugated

Additional Info

ALTERNATE NAMES:	TRPC6 Antibody: TRP6, FSGS2, TRP6, Short transient receptor potential channel 6, Transient receptor protein 6, TrpC6
ACCESSION NO.:	AAH93658
PROTEIN GI NO.:	62739910
OFFICIAL SYMBOL:	TRPC6
GENE ID:	7225

Background

BACKGROUND:	TRPC6 Antibody: The mammalian transient receptor potential (TRP) superfamily can be divided into three major families including the "canonical TRP" (TRPC) family. The seven members of this family share the activation through PLC-coupled receptors and have been suggested to be components of receptor-regulated cation channels in different cell types. Furthermore, the members of the TRPC3/6/7 subfamily can be activated by diacylglycerol (DAG) analogs, suggesting a possible mechanism of activation of these channels by PLC-coupled receptors. When expressed in transfected cells, TRPC6 acts as a non-selective store-independent receptor-activated cation channel. It is activated by DAG in a PKC-independent manner and is insensitive to IP3 activation. There is increasing evidence that TRPC6 encodes endogenous DAG-activated receptor-operated cation channels in vivo.
REFERENCES:	<p>1) Contell C, Birnbaumer V, Flockerzi V, et al. A unified nomenclature for the superfamily of TRP cation channels. Mol. Cell 2002; 9:229-31.</p> <p>2) Dietrich A, Kalwa H, Rost BR, et al. The diacylglycerol-sensitive TRPC3/6/7 subfamily of cation channels: functional characterization and physiological relevance. Pflugers Arch. 2005; 451:72-80.</p> <p>3) Trebak M, Vazquez G, Bird GSJ, et al. The TRPC3/6/7 subfamily of cation channels. Cell Calcium 2003; 33:451-61</p>

FOR RESEARCH USE ONLY

December 13, 2016