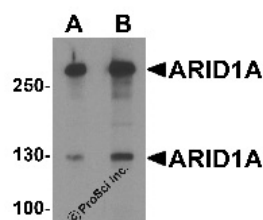


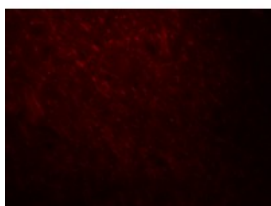


## ARID1A Antibody

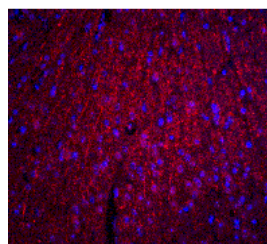
CATALOG NUMBER: 8173



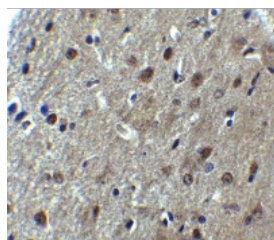
Western blot analysis of ARID1A in SK-N-SH cell lysate with ARID1A antibody at (A) 1 and (B) 2 ug/ml.



Immunofluorescence of ARID1A in mouse brain tissue with ARID1A antibody at 20 ug/ml.



Immunofluorescence of ARID1A in mouse brain tissue with ARID1A antibody at 20 ug/ml.



Immunohistochemistry of ARID1A in mouse brain tissue with ARID1A antibody at 5 ug/mL.

### Specifications

<b>SPECIES REACTIVITY:</b>	Human, Mouse, Rat
<b>TESTED APPLICATIONS:</b>	ELISA, IF, IHC-P, WB
<b>APPLICATIONS:</b>	ARID1A antibody can be used for detection of ARID1A by Western blot at 1 - 2 ug/mL. For immunofluorescence start at 20 ug/mL.
<b>USER NOTE:</b>	Optimal dilutions for each application to be determined by the researcher.
<b>POSITIVE CONTROL:</b>	1) Cat. No. 1220 - SK-N-SH Cell Lysate
<b>PREDICTED MOLECULAR WEIGHT:</b>	Predicted: 133, 227, 251 kDa Observed: 130, 260 kDa
<b>SPECIFICITY:</b>	ARID1A antibody is human, mouse and rat reactive. Multiple isoforms of ARID1A protein are known to exist.
<b>IMMUNOGEN:</b>	ARID1A antibody was raised against an 18 amino acid peptide near the amino terminus of human ARID1A.  The immunogen is located within amino acids 580 - 630 of ARID1A.
<b>HOST SPECIES:</b>	Rabbit

### Properties

<b>PURIFICATION:</b>	ARID1A antibody is affinity chromatography purified via peptide column.
<b>PHYSICAL STATE:</b>	Liquid
<b>BUFFER:</b>	ARID1A antibody is supplied in PBS containing 0.02% sodium azide.
<b>CONCENTRATION:</b>	1 mg/mL
<b>STORAGE CONDITIONS:</b>	ARID1A antibody can be stored at 4°C for three months and -20°C, stable for up to one year.
<b>CLONALITY:</b>	Polyclonal
<b>ISOTYPE:</b>	IgG
<b>CONJUGATE:</b>	Unconjugated

#### Additional Info

<b>ALTERNATE NAMES:</b>	AT rich interactive domain 1A (SWI-like), RP1-50O24.1, B120, BAF250, BAF250a, BM029, C1orf4, ELD, hELD, MRD14, OSA1, hOSA1, P270, SMARCF1
<b>ACCESSION NO.:</b>	NP_006006
<b>PROTEIN GI NO.:</b>	21264565
<b>OFFICIAL SYMBOL:</b>	ARID1A
<b>GENE ID:</b>	8289

#### Background

<b>BACKGROUND:</b>	The ARID1A protein is a member of the SWI/SNF family, whose members are thought to regulate transcription of certain genes by altering the chromatin structure around those genes. ARID1A is part of the large ATP-dependent chromatin remodeling complex SNF/SWI, which is required for transcriptional activation of genes normally repressed by chromatin (1). It possesses a DNA-binding domain that can specifically bind an AT-rich DNA sequence known to be recognized by a SNF/SWI complex at the beta-globin locus. The C-terminus of the protein can stimulate glucocorticoid receptor-dependent transcriptional activation. It is thought that ARID1A confers specificity to the SNF/SWI complex and may recruit the complex to its targets through either protein-DNA or protein-protein interactions (2).
<b>REFERENCES:</b>	1) Martens JA and Winston F. Recent advances in understanding chromatin remodeling by Swi/Snf complexes. Curr. Opin. Genet. Dev. 2003; 13:136-42. 2) Nie Z, Xue Y, Yang D, et al. A specificity and targeting subunit of a human SWI/SNF family-related chromatin-remodeling complex. Mol. Cell. Biol. 2000; 20:8879-88.

**FOR RESEARCH USE ONLY**

December 14, 2016