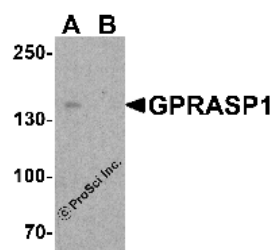


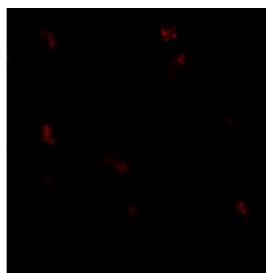


## GPRASP1 Antibody

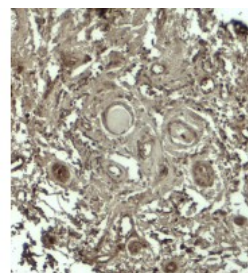
CATALOG NUMBER: 7993



Western blot analysis of GPRASP1 in A-20 cell lysate with GPRASP1 antibody at 1 ug/ml in (A) the absence and (B) the presence of blocking peptide.



Immunofluorescence of GPRASP1 in human breast carcinoma tissue with GPRASP1 antibody at 20 ug/ml.



Immunohistochemistry of GPRASP1 in human breast carcinoma tissue with GPRASP12 antibody at 5 ug/ml.

### Specifications

<b>SPECIES REACTIVITY:</b>	Human, Mouse
<b>TESTED APPLICATIONS:</b>	ELISA, IF, IHC-P, WB
<b>APPLICATIONS:</b>	GPRASP1 antibody can be used for detection of GPRASP1 by Western blot at 1 - 2 ug/ml. Antibody can also be used for immunohistochemistry starting at 5 ug/mL. For immunofluorescence start at 20 ug/mL.
<b>USER NOTE:</b>	Optimal dilutions for each application to be determined by the researcher.
<b>POSITIVE CONTROL:</b>	1) Cat. No. 1288 - A-20 Cell Lysate
<b>PREDICTED MOLECULAR WEIGHT:</b>	Predicted: 153 kDa Observed: 150 kDa
<b>SPECIFICITY:</b>	GPRASP1 antibody is human and mouse reactive. This antibody is predicted to not cross-react with GPRASP2.
<b>IMMUNOGEN:</b>	GPRASP1 antibody was raised against a 15 amino acid peptide near the amino terminus of human GPRASP1.  The immunogen is located within amino acids 260 - 310 of GPRASP1.
<b>HOST SPECIES:</b>	Rabbit

### Properties

<b>PURIFICATION:</b>	GPRASP1 antibody is affinity chromatography purified via peptide column.
<b>PHYSICAL STATE:</b>	Liquid
<b>BUFFER:</b>	GPRASP1 antibody is supplied in PBS containing 0.02% sodium azide.
<b>CONCENTRATION:</b>	1 mg/mL
<b>STORAGE CONDITIONS:</b>	GPRASP1 antibody can be stored at 4°C for three months and -20°C, stable for up to one year.
<b>CLONALITY:</b>	Polyclonal
<b>ISOTYPE:</b>	IgG
<b>CONJUGATE:</b>	Unconjugated

### Additional Info

<b>ALTERNATE NAMES:</b>	G-protein coupled receptor-associated sorting protein 1, GASP, GASP-1, GASP1
<b>ACCESSION NO.:</b>	NP_001171656
<b>PROTEIN GI NO.:</b>	296080706
<b>OFFICIAL SYMBOL:</b>	GPRASP1
<b>GENE ID:</b>	9737

## Background

**BACKGROUND:** The G protein-coupled receptor associated sorting protein 1 (GPRASP1) is a member of the GPRASP family and is thought to modulate lysosomal sorting and functional down-regulation of a variety of G-protein coupled receptors (1,2). GPRASP1 interacts with receptors such as the D2 dopamine receptor (DRD2), delta opioid receptor (OPRD1), beta-2 adrenergic receptor (ADRB2), D4 dopamine receptor (DRD4) and cannabinoid 1 receptor (CNR1) and targets these proteins for degradation in lysosomes (2). Recently, it has been shown that increased GPRASP1 levels may act as a potential biomarker for breast cancer (3).

**REFERENCES:**

- 1) Simonin F, Karcher P, Boeuf JJ, et al. Identification of a novel family of G protein-coupled receptor associated proteins. J. Neurochem. 2004; 89:766-75.
- 2) Moser E, Kargl J, Whistler JL, et al. G protein-coupled receptor-associated sorting protein 1 regulates the postendocytic sorting of seven-transmembrane-spanning G protein-coupled receptors. Pharmacology 2010; 86:22-9.
- 3) Tuszyński GP, Rothman VL, Zheng X, et al. G-protein coupled receptor-associated sorting protein 1 (GASP-1), a potential biomarker in breast cancer. Exp. Mol. Pathol. 2011; 91:608-13.

**FOR RESEARCH USE ONLY**

December 14, 2016