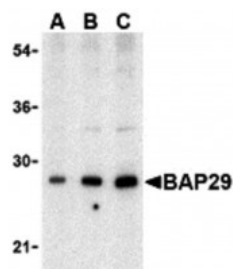


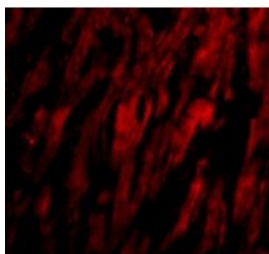


BAP29 Antibody

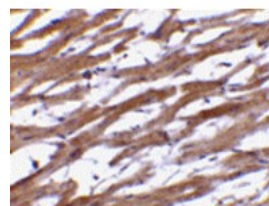
CATALOG NUMBER: 3667



Western blot analysis of Bap29 in human heart tissue lysate with Bap29 antibody at (A) 0.5, (B) 1 and (C) 2ug/mL.



Immunofluorescence of BAP29 in Human Heart cells with BAP29 antibody at 20 ug/mL.



Immunohistochemistry of BAP29 in human heart tissue with BAP29 antibody at 10 ug/mL.

Specifications

SPECIES REACTIVITY:	Human, Mouse, Rat
HOMOLOGY:	Predicted species reactivity based on immunogen sequence: Bovine: (88%)
TESTED APPLICATIONS:	ELISA, IF, IHC-P, WB
APPLICATIONS:	Bap29 antibody can be used for the detection of Bap29 by Western blot at 0.5 - 2 ug/mL. Antibody can also be used for immunohistochemistry starting at 10 ug/mL. For immunofluorescence start at 20 ug/mL.
USER NOTE:	Optimal dilutions for each application to be determined by the researcher.
POSITIVE CONTROL:	1) Cat. No. 1301 - Human Heart Tissue Lysate
IMMUNOGEN:	BAP29 antibody was raised against a 17 amino acid synthetic peptide from near the center of human Bap29. Bap29 antibody is specific for isoform a of Bap29. The immunogen is located within amino acids 130 - 180 of BAP29.
HOST SPECIES:	Rabbit

Properties

PURIFICATION:	BAP29 Antibody is affinity chromatography purified via peptide column.
PHYSICAL STATE:	Liquid
BUFFER:	BAP29 Antibody is supplied in PBS containing 0.02% sodium azide.
CONCENTRATION:	1 mg/mL
STORAGE CONDITIONS:	BAP29 antibody can be stored at 4°C for three months and -20°C, stable for up to one year. As with all antibodies care should be taken to avoid repeated freeze thaw cycles. Antibodies should not be exposed to prolonged high temperatures.
CLONALITY:	Polyclonal
ISOTYPE:	IgG
CONJUGATE:	Unconjugated

Additional Info

ALTERNATE NAMES:	BAP29 Antibody: BAP29, BAP29, B-cell receptor-associated protein 29, BCR-associated protein 29
-------------------------	--

ACCESSION NO.:	NP_001008405
PROTEIN GI NO.:	56549093
OFFICIAL SYMBOL:	BCAP29
GENE ID:	55973

Background

BACKGROUND: BAP29 Antibody: Bap29 and the related protein Bap31 are endoplasmic reticulum (ER) and ER-vesicle membrane proteins and members of the B-cell receptor-associated protein family. These two proteins are highly homologous and can form homo- and heterodimers. Both Bap29 and Bap31 interact with membrane-bound immunoglobulins (mIgs), such as IgM and IgD, which with Ig-alpha/Ig-beta heterodimers form B cell antigen receptors. Binding of the Bap29/Bap31 heterodimer correlates with the ER retention of non-Ig-alpha/Ig-beta bound mIg complexes, suggesting that Bap29 and Bap31 may act as chaperones transmembrane regions of various proteins. Bap29 possesses multiple isoforms.

REFERENCES:

- 1) Kim KM, Adachi T, Nielsen PJ, et al. Two new proteins preferentially associated with membrane immunoglobulin D. EMBO J.1994; 13:3793-800.
- 2) Ng F, Nguyen M, Kwan T, et al. p28 BAP31, a Bcl-2/Bcl-XL- and procaspase-8-associated protein the endoplasmic reticulum. J. Cell Biol.1997; 139:327-38.
- 3) Schamel WW, Kuppig S, Becker B, et al. A high-molecular-weight complex of membrane proteins BAP29/BAP31 is involved in the retention of membrane-bound IgD in the endoplasmic reticulum. Proc. Natl. Acad. Sci. USA2003; 100:9861-6.

FOR RESEARCH USE ONLY

December 13, 2016