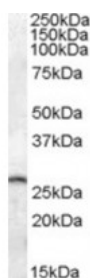




PSPH Antibody

CATALOG NUMBER: 46-991



Western blot analysis of PSPH in mouse brain lysate (35 ug protein in RIPA buffer) using PSPH Antibody at 0.05 ug/mL.

Specifications

SPECIES REACTIVITY:	Human, Mouse
TESTED APPLICATIONS:	ELISA, WB
APPLICATIONS:	ELISA: Antibody detection limit dilution 1:32000. Western Blot: Approximately 26 kDa band observed in human hippocampus and in mouse brain lysates (calculated MW of 25.0 kDa according to human NP_004568.2 and 25.1 kDa according to mouse NP_598661.1). Recommended concentration: 0.05-1 ug/mL.
POSITIVE CONTROL:	1) Cat. No. 1403 - Mouse Brain Tissue Lysate
IMMUNOGEN:	PSPH antibody was raised against a 14 amino acid synthetic peptide near the C-Terminus of PSPH.
HOST SPECIES:	Goat

Properties

PURIFICATION:	PSPH antibody was purified from goat serum by ammonium sulphate precipitation followed by antigen affinity chromatography using the immunizing peptide.
PHYSICAL STATE:	Liquid
BUFFER:	PSPH antibody is supplied in Tris saline, 0.02% sodium azide, pH 7.3 with 0.5% bovine serum albumin.
CONCENTRATION:	500 ug/mL
STORAGE CONDITIONS:	Aliquot and store at -20°C. Minimize freezing and thawing.
CLONALITY:	Polyclonal
CONJUGATE:	Unconjugated

Additional Info

ALTERNATE NAMES:	PSPH, phosphoserine phosphatase, PSP, L-3-phosphoserine phosphatase, O-phosphoserine phosphohydrolase, OTTHUMP00000025059, PSPase, PSPHD
ACCESSION NO.:	NP_004568.2
PROTEIN GI NO.:	46249388
OFFICIAL SYMBOL:	PSPH
GENE ID:	5723

Background

REFERENCES: 1) Veeranna, Shetty KT. Phosphoserine phosphatase of human brain: partial purification, characterization, regional distribution, and effect of certain modulators including psychoactive drugs. *Neurochem Res.* 1990 Dec;15(12):1203-10.

FOR RESEARCH USE ONLY

December 13, 2016