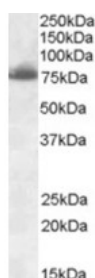




DLL1 Antibody

CATALOG NUMBER: 46-984



Western blot analysis of DLL1 in rat heart lysate (35 ug protein in RIPA buffer) using DLL1 Antibody at 0.3 ug/mL.

Specifications

SPECIES REACTIVITY:	Mouse, Rat
TESTED APPLICATIONS:	ELISA, WB
APPLICATIONS:	ELISA: Antibody detection limit dilution 1:16000. Approximately 75 kDa band observed in mouse heart and rat heart lysates (calculated MW of 78.1 kDa according to human NP_005609.3, 78.5 kDa according to mouse NP_031891.2 and 77.4 kDa according to rat NP_114452.1). Recommended concentration: 0.3-1 ug/mL.
POSITIVE CONTROL:	1) Cat. No. 1461 - Rat Heart Tissue Lysate
IMMUNOGEN:	DLL1 antibody was raised against a 15 amino acid synthetic peptide near the internal region of DLL1.
HOST SPECIES:	Goat

Properties

PURIFICATION:	DLL1 antibody was purified from goat serum by ammonium sulphate precipitation followed by antigen affinity chromatography using the immunizing peptide.
PHYSICAL STATE:	Liquid
BUFFER:	DLL1 antibody is supplied in Tris saline, 0.02% sodium azide, pH 7.3 with 0.5% bovine serum albumin.
CONCENTRATION:	500 ug/mL
STORAGE CONDITIONS:	Aliquot and store at -20°C. Minimize freezing and thawing.
CLONALITY:	Polyclonal
CONJUGATE:	Unconjugated

Additional Info

ALTERNATE NAMES:	DLL1, delta-like 1 (Drosophila), DELTA1, DL1, Delta, OTTHUMP00000017690, delta (Drosophila)-like 1, delta-like 1, delta-like 1 protein
ACCESSION NO.:	NP_005609.3
PROTEIN GI NO.:	110735443
OFFICIAL SYMBOL:	DLL1
GENE ID:	28514

Background

REFERENCES: 1) Ivey KN, Muth A, Arnold J, King FW, Yeh RF, Fish JE, Hsiao EC, Schwartz RJ, Conklin BR, Bernstein HS, Srivastava D. MicroRNA regulation of cell lineages in mouse and human embryonic stem cells. 2008 Mar 2 (3): 219-29.

FOR RESEARCH USE ONLY

December 13, 2016