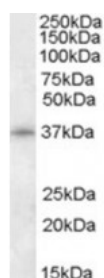




CDK10 Antibody

CATALOG NUMBER: 46-980



Western blot analysis of CDK10 in HepG2 lysate (35 ug protein in RIPA buffer) using CDK10 Antibody at 0.5 ug/mL.

Specifications

SPECIES REACTIVITY:	Mouse, Rat
TESTED APPLICATIONS:	ELISA, WB
APPLICATIONS:	ELISA: Antibody detection limit dilution 1:8000. Western Blot: Approximately 70 kDa band observed in mouse and rat liver lysates (calculated MW of 68.7 kDa according to human NP_001477.1 and of 68.9 kDa according to rat NP_037252.1). Recommended concentration: 0.1-0.3 ug/mL.
POSITIVE CONTROL:	1) Cat. No. 1211 - HepG2 Cell Lysate
SPECIFICITY:	This antibody is expected to recognize reported isoform a (NP_443714.3).
IMMUNOGEN:	CDK10 antibody was raised against a 15 amino acid synthetic peptide near the N-Terminus of CDK10.
HOST SPECIES:	Goat

Properties

PURIFICATION:	CDK10 antibody was purified from goat serum by ammonium sulphate precipitation followed by antigen affinity chromatography using the immunizing peptide.
PHYSICAL STATE:	Liquid
BUFFER:	CDK10 antibody is supplied in Tris saline, 0.02% sodium azide, pH 7.3 with 0.5% bovine serum albumin.
CONCENTRATION:	500 ug/mL
STORAGE CONDITIONS:	Aliquot and store at -20°C. Minimize freezing and thawing.
CLONALITY:	Polyclonal
CONJUGATE:	Unconjugated

Additional Info

ALTERNATE NAMES:	CDK10, cyclin-dependent kinase 10, PISSLRE, CDC2-related protein kinase, cell division protein kinase 10, cyclin-dependent kinase (CDC2-like) 10, cyclin-dependent kinase related protein, serine/threonine protein kinase PISSLRE
ACCESSION NO.:	NP_443714.3
PROTEIN GI NO.:	148596926

OFFICIAL SYMBOL: CDK10

GENE ID: 8558

Background

REFERENCES: 1) Iorns E, Turner NC, Elliott R, Syed N, Garrone O, Gasco M, Tutt AN, Crook T, Lord CJ, Ashworth A. Identification of CDK10 as an important determinant of resistance to endocrine therapy for breast cancer. Cancer Cell. 2008 Feb;13(2):91-104.

FOR RESEARCH USE ONLY

December 13, 2016