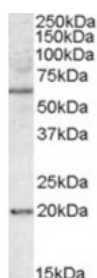




BAG4 Antibody

CATALOG NUMBER: 46-977



Western blot analysis of BAG4 in HEK293 lysate (35 ug protein in RIPA buffer) using BAG4 Antibody at 1 ug/mL.

Specifications

SPECIES REACTIVITY:	Human
TESTED APPLICATIONS:	ELISA, WB
APPLICATIONS:	ELISA: Antibody detection limit dilution 1:8000. Approximately 60 kDa band observed in cell lines HEK293 and HeLa lysates (calculated MW of 49.6 kDa according to NP_004865.1). The observed molecular weight corresponds to earlier findings in literature with different antibodies (Takada et al, Mol Cell Biol. 2003 Jun;23 (11):4026-33.; PMID: 12748303). Recommended concentration: 0.3-1 ug/mL. an additional band of unknown identity was also consistently observed at 20 kDa . This band was successfully blocked by incubation with the immunizing peptide.
POSITIVE CONTROL:	1) Cat. No. 1210 - 293 Cell Lysate
IMMUNOGEN:	BAG4 antibody was raised against a 15 amino acid synthetic peptide near the internal region of BAG4.
HOST SPECIES:	Goat

Properties

PURIFICATION:	BAG4 antibody was purified from goat serum by ammonium sulphate precipitation followed by antigen affinity chromatography using the immunizing peptide.
PHYSICAL STATE:	Liquid
BUFFER:	BAG4 antibody is supplied in Tris saline, 0.02% sodium azide, pH 7.3 with 0.5% bovine serum albumin.
CONCENTRATION:	500 ug/mL
STORAGE CONDITIONS:	Aliquot and store at -20°C. Minimize freezing and thawing.
CLONALITY:	Polyclonal
CONJUGATE:	Unconjugated

Additional Info

ALTERNATE NAMES:	BAG4, BCL2-associated athanogene 4, BAG-4, SODD, BAG-family molecular chaperone regulator-4, silencer of death domains
ACCESSION NO.:	NP_004865.1
PROTEIN GI NO.:	6631075

OFFICIAL SYMBOL: BAG4

GENE ID: 9530

Background

REFERENCES: 1) Annunziata CM, Kleinberg L, Davidson B, Berner A, Gius D, Tchabo N, Steinberg SM, Kohn EC. BAG-4/SODD and associated antiapoptotic proteins are linked to aggressiveness of epithelial ovarian cancer. Clin Cancer Res. 2007 Nov 15;13(22 Pt 1):6585-92

FOR RESEARCH USE ONLY

December 13, 2016