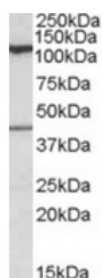




COG1 Antibody

CATALOG NUMBER: 46-962



Western blot analysis of COG1 in human cerebellum lysate (35 ug protein in RIPA buffer) using COG1 Antibody at 0.1 ug/mL.

Specifications

SPECIES REACTIVITY:	Human
TESTED APPLICATIONS:	ELISA, WB
APPLICATIONS:	ELISA: Antibody detection limit dilution 1:64000. Approximately 110 kDa band observed in human brain (cerebellum, amygdala) lysates (calculated MW of 109 kDa according to NP_061184.1). Recommended concentration: 0.1-0.3 ug/mL. an additional band of unknown identity was also consistently observed at 45 kDa . This band was successfully blocked by incubation with the immunizing peptide.
POSITIVE CONTROL:	1) Cat. No. 1362 - Human Cerebellum, Left Lysate Cat. No. 1363 - Human Cerebellum, Right Lysate
IMMUNOGEN:	COG1 antibody was raised against a 13 amino acid synthetic peptide near the internal region of COG1.
HOST SPECIES:	Goat

Properties

PURIFICATION:	COG1 antibody was purified from goat serum by ammonium sulphate precipitation followed by antigen affinity chromatography using the immunizing peptide.
PHYSICAL STATE:	Liquid
BUFFER:	COG1 antibody is supplied in Tris saline, 0.02% sodium azide, pH 7.3 with 0.5% bovine serum albumin.
CONCENTRATION:	500 ug/mL
STORAGE CONDITIONS:	Aliquot and store at -20°C. Minimize freezing and thawing.
CLONALITY:	Polyclonal
CONJUGATE:	Unconjugated

Additional Info

ALTERNATE NAMES:	COG1, component of oligomeric golgi complex 1, CDG2G, DKFZp762L1710, KIAA1381, LDLB, conserved oligomeric Golgi complex protein 1, low density lipoprotein receptor defect B complementing
ACCESSION NO.:	NP_061184.1
PROTEIN GI NO.:	21237783
OFFICIAL SYMBOL:	COG1

GENE ID: 9382

Background

REFERENCES: 1) Vasile E, Oka T, Ericsson M, Nakamura N, Krieger M. IntraGolgi distribution of the Conserved Oligomeric Golgi (COG) complex. Exp Cell Res. 2006 Oct 1;312(16):3132-41.

FOR RESEARCH USE ONLY

December 13, 2016