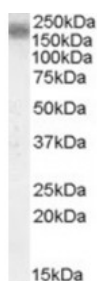




## LRP4 Antibody

CATALOG NUMBER: 46-951



Western blot analysis of LRP4 in human cerebral cortex lysate (35 ug protein in RIPA buffer) using LRP4 Antibody at 0.1 ug/mL.

### Specifications

<b>SPECIES REACTIVITY:</b>	Human
<b>TESTED APPLICATIONS:</b>	ELISA, WB
<b>APPLICATIONS:</b>	ELISA: Antibody detection limit dilution 1:32000. Approximately 200 kDa band observed in human cerebral cortex lysates (calculated MW of 212 kDa according to NP_002325.2). Recommended concentration: 0.1-0.3 ug/mL.
<b>POSITIVE CONTROL:</b>	1) Cat. No. XBL-10106 - Human Cerebral Cortex Tissue Lysate
<b>IMMUNOGEN:</b>	LRP4 antibody was raised against a 15 amino acid synthetic peptide near the internal region of LRP4.
<b>HOST SPECIES:</b>	Goat

### Properties

<b>PURIFICATION:</b>	LRP4 antibody was purified from goat serum by ammonium sulphate precipitation followed by antigen affinity chromatography using the immunizing peptide.
<b>PHYSICAL STATE:</b>	Liquid
<b>BUFFER:</b>	LRP4 antibody is supplied in Tris saline, 0.02% sodium azide, pH 7.3 with 0.5% bovine serum albumin.
<b>CONCENTRATION:</b>	500 ug/mL
<b>STORAGE CONDITIONS:</b>	Aliquot and store at -20°C. Minimize freezing and thawing.
<b>CLONALITY:</b>	Polyclonal
<b>CONJUGATE:</b>	Unconjugated

### Additional Info

<b>ALTERNATE NAMES:</b>	LRP4, low density lipoprotein receptor-related protein 4, KIAA0816, LRP10, MEGF7, low-density lipoprotein receptor-related protein 4
<b>ACCESSION NO.:</b>	NP_002325.2
<b>PROTEIN GI NO.:</b>	157384998
<b>OFFICIAL SYMBOL:</b>	LRP4
<b>GENE ID:</b>	4038

## Background

**REFERENCES:** 1) Sagare A, Deane R, Bell RD, Johnson B, Hamm K, Pendu R, Marky A, Lenting PJ, Wu Z, Zarcone T, Goate A, Mayo K, Perlmutter D, Coma M, Zhong Z, Zlokovic BV. Clearance of amyloid-beta by circulating lipoprotein receptors. *Nat Med.* 2007 Sep;13(9):1029-31. Epub 2007 Aug 12.

---

**FOR RESEARCH USE ONLY**

December 13, 2016