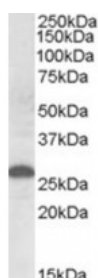




Apolipoprotein M Antibody

CATALOG NUMBER: 46-946



Western blot analysis of Apolipoprotein M in human placenta lysate (35 ug protein in RIPA buffer) using Apolipoprotein M Antibody at 0.5 ug/mL.

Specifications

SPECIES REACTIVITY:	Human
TESTED APPLICATIONS:	ELISA, WB
POSITIVE CONTROL:	1) Cat. No. 1309 - Human Placenta Lysate
IMMUNOGEN:	Apolipoprotein M antibody was raised against a 13 amino acid synthetic peptide near the internal region of Apolipoprotein M.
HOST SPECIES:	Goat

Properties

PURIFICATION:	Apolipoprotein M antibody was purified from goat serum by ammonium sulphate precipitation followed by antigen affinity chromatography using the immunizing peptide.
PHYSICAL STATE:	Liquid
BUFFER:	Apolipoprotein M antibody is supplied in Tris saline, 0.02% sodium azide, pH 7.3 with 0.5% bovine serum albumin.
CONCENTRATION:	500 ug/mL
STORAGE CONDITIONS:	Aliquot and store at -20°C. Minimize freezing and thawing.
CLONALITY:	Polyclonal
CONJUGATE:	Unconjugated

Additional Info

ALTERNATE NAMES:	Apom, apolipoprotein M, G3a, NG20, 1190010O19Rik, Ng20
ACCESSION NO.:	NP_061286.1
PROTEIN GI NO.:	9055162
OFFICIAL SYMBOL:	Apom
GENE ID:	55938 (mouse); 55939 (rat);

Background

REFERENCES:

1) Karlsson H, Lindqvist H, Tagesson C, Lindahl M Characterization of apolipoprotein M isoforms in low-density lipoprotein J Proteome Res. 2006 Oct;5(10):2685-90

FOR RESEARCH USE ONLY

December 13, 2016