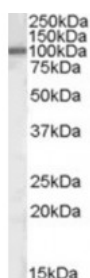




ZEB1 Antibody

CATALOG NUMBER: 46-932



Western blot analysis of ZEB1 in mouse heart lysate (35 ug protein in RIPA buffer) using ZEB1 Antibody at 0.05 ug/mL.

Specifications

SPECIES REACTIVITY:	Human, Mouse
TESTED APPLICATIONS:	ELISA, WB
APPLICATIONS:	ELISA: Antibody detection limit dilution 1:32,000. Western Blot: Approximately 100 kDa band observed in human heart and mouse heart lysates (calculated MW of 122 kDa according to human NP_110378.3 and mouse NP_035676.1). Recommended concentration: 0.05-0.
POSITIVE CONTROL:	1) Cat. No. 1401 - Mouse Heart Tissue Lysate
SPECIFICITY:	This antibody is expected to recognize both reported isoforms (NP_001121600.1; NP_110378.3).
IMMUNOGEN:	ZEB1 antibody was raised against a 15 amino acid synthetic peptide near the internal region of ZEB1.
HOST SPECIES:	Goat

Properties

PURIFICATION:	ZEB1 antibody was purified from goat serum by ammonium sulphate precipitation followed by antigen affinity chromatography using the immunizing peptide.
PHYSICAL STATE:	Liquid
BUFFER:	ZEB1 antibody is supplied in Tris saline, 0.02% sodium azide, pH 7.3 with 0.5% bovine serum albumin.
CONCENTRATION:	500 ug/mL
STORAGE CONDITIONS:	Aliquot and store at -20°C. Minimize freezing and thawing.
CLONALITY:	Polyclonal
CONJUGATE:	Unconjugated

Additional Info

ALTERNATE NAMES:	ZEB1, AREB6, zinc finger E-box binding homeobox 1, BZP, DELTA-EF1, MGC133261, NIL-2-A, NIL-2A, NIL2A, TCF8, ZEB, ZFHEP, ZFH1A, OTTHUMP00000019405, transcription factor 8 (represses interleukin 2 expression), zinc finger homeodomain enhancer-binding protein
ACCESSION NO.:	NP_001121600.1, NP_110378.3
PROTEIN GI NO.:	189409130

OFFICIAL SYMBOL: ZEB1

GENE ID: 6935

Background

REFERENCES: 1) Park SM, Gaur AB, Lengyel E, Peter ME. The miR-200 family determines the epithelial phenotype of cancer cells by targeting the E-cadherin repressors ZEB1 and ZEB2. Genes Dev. 2008 Apr 22 (7): 894-907.

FOR RESEARCH USE ONLY

December 13, 2016