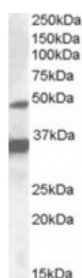




NR1I2 Antibody

CATALOG NUMBER: 46-930



Western blot analysis of NR1I2 in HepG2 lysate (35 ug protein in RIPA buffer) using NR1I2 Antibody at 1 ug/mL.

Specifications

SPECIES REACTIVITY:	Human
TESTED APPLICATIONS:	ELISA, WB
APPLICATIONS:	ELISA: Antibody detection limit dilution 1:4,000. Western Blot: Approximately 48 kDa band observed in HEPG2 lysate (calculated MW of 49.8 kDa according to NP_003880.3). Recommended concentration: 1-3 ug/mL. an additional band of unknown
POSITIVE CONTROL:	1) Cat. No. 1211 - HepG2 Cell Lysate
SPECIFICITY:	This antibody is expected to recognize all reported isoforms (NP_071285.1; NP_148934.1; NP_003880.3).
IMMUNOGEN:	NR1I2 antibody was raised against a 15 amino acid synthetic peptide near the internal region of NR1I2.
HOST SPECIES:	Goat

Properties

PURIFICATION:	NR1I2 antibody was purified from goat serum by ammonium sulphate precipitation followed by antigen affinity chromatography using the immunizing peptide.
PHYSICAL STATE:	Liquid
BUFFER:	NR1I2 antibody is supplied in Tris saline, 0.02% sodium azide, pH 7.3 with 0.5% bovine serum albumin.
CONCENTRATION:	500 ug/mL
STORAGE CONDITIONS:	Aliquot and store at -20°C. Minimize freezing and thawing.
CLONALITY:	Polyclonal
CONJUGATE:	Unconjugated

Additional Info

ALTERNATE NAMES:	NR1I2, nuclear receptor subfamily 1, group I, member 2, BXR, ONR1, PAR, PAR1, PAR2, PARq, PRR, PXR, SAR, SXR, orphan nuclear receptor, pregnane X receptor, steroid and xenobiotic receptor
ACCESSION NO.:	NP_003880.3, NP_071285.1, NP_148934.1
PROTEIN GI NO.:	34398348
OFFICIAL SYMBOL:	NR1I2

Background

FOR RESEARCH USE ONLY

December 13, 2016