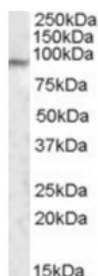




MED15 Antibody

CATALOG NUMBER: 46-928



Western blot analysis of MED15 in human lung lysate (35 ug protein in RIPA buffer) using MED15 Antibody at 1 ug/mL.

Specifications

SPECIES REACTIVITY:	Human
TESTED APPLICATIONS:	ELISA, WB
APPLICATIONS:	ELISA: Antibody detection limit dilution 1:8,000. Western Blot: Approximately 90 kDa band observed in human lung lysates (calculated MW of 86.8 kDa according to NP_001003891.1). Recommended concentration: 1-3 ug/mL.
POSITIVE CONTROL:	1) Cat. No. 1302 - Human Lung Tissue Lysate
SPECIFICITY:	This antibody is expected to recognize both reported isoforms (NP_001003891.1; NP_056973.2).
IMMUNOGEN:	MED15 antibody was raised against a 14 amino acid synthetic peptide near the internal region of MED15.
HOST SPECIES:	Goat

Properties

PURIFICATION:	MED15 antibody was purified from goat serum by ammonium sulphate precipitation followed by antigen affinity chromatography using the immunizing peptide.
PHYSICAL STATE:	Liquid
BUFFER:	MED15 antibody is supplied in Tris saline, 0.02% sodium azide, pH 7.3 with 0.5% bovine serum albumin.
CONCENTRATION:	500 ug/mL
STORAGE CONDITIONS:	Aliquot and store at -20°C. Minimize freezing and thawing.
CLONALITY:	Polyclonal
CONJUGATE:	Unconjugated

Additional Info

ALTERNATE NAMES:	MED15, mediator complex subunit 15, ARC105, CAG7A, CTG7A, DKFZp686A2214, DKFZp762B1216, FLJ42282, FLJ42935, PCQAP, TIG-1, TIG1, TNRC7, CTG repeat protein 7a, PC2 (positive cofactor 2, multiprotein complex) glutamine/Q-rich-associated protein, PC2-glutamine-rich-associated protein, TPA inducible gene-1, TPA inducible protein, activator-recruited cofactor, 105-kD, positive cofactor 2, glutamine/Q-rich-associated protein, trinucleotide repeat containing 7
ACCESSION NO.:	NP_001003891.1, NP_056973.2

PROTEIN GI NO.: 51477700

OFFICIAL SYMBOL: MED15

GENE ID: 51586

Background

FOR RESEARCH USE ONLY

December 13, 2016