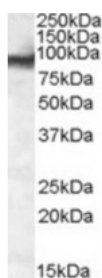




EWS Antibody

CATALOG NUMBER: 46-926



Western blot analysis of EWS in nuclear HeLa lysate (35 ug protein in RIPA buffer) using EWS Antibody at 0.1 ug/mL.

Specifications

SPECIES REACTIVITY:	Human
TESTED APPLICATIONS:	ELISA, IHC, WB
APPLICATIONS:	ELISA: Antibody detection limit dilution 1:16,000. Western Blot: Approximately 90 kDa band observed in Nuclear HeLa lysate (calculated MW of 68.5 kDa according to NP_053733.1). The observed molecular weight corresponds to earlier findings wi
POSITIVE CONTROL:	1) Cat. No. XBL-10433 - HeLa Nuclear Lysate
SPECIFICITY:	This antibody is expected to recognize both reported isoforms (NP_005234.1; NP_053733.1).
IMMUNOGEN:	EWS antibody was raised against a 15 amino acid synthetic peptide near the internal region of EWS.
HOST SPECIES:	Goat

Properties

PURIFICATION:	EWS antibody was purified from goat serum by ammonium sulphate precipitation followed by antigen affinity chromatography using the immunizing peptide.
PHYSICAL STATE:	Liquid
BUFFER:	EWS antibody is supplied in Tris saline, 0.02% sodium azide, pH 7.3 with 0.5% bovine serum albumin.
CONCENTRATION:	500 ug/mL
STORAGE CONDITIONS:	Aliquot and store at -20°C. Minimize freezing and thawing.
CLONALITY:	Polyclonal
CONJUGATE:	Unconjugated

Additional Info

ALTERNATE NAMES:	EWSR1, Ewing sarcoma breakpoint region 1, EWS, EWS/FLI fusion protein, EWSR1/ZNF384 fusion protein, Ewings sarcoma EWS-Fli1 (type 1) oncogene, bK984G1.4 (Ewing sarcoma breakpoint region 1 protein), extraskeletal myxoid chondrosarcoma EWS/TEC/CHN fusion protein
ACCESSION NO.:	NP_053733.1, NP_005234.1
PROTEIN GI NO.:	7669490

OFFICIAL SYMBOL: EWSR1

GENE ID: 2130

Background

REFERENCES: 1) Toretzky JA, Erkizan V, Levenson A, Abaan OD, Parvin JD, Cripe TP, Rice AM, Lee SB, Uren A. Oncoprotein EWS-FLI1 activity is enhanced by RNA helicase A. Cancer Res. 2006 Jun 1;66(11):5574-81.

FOR RESEARCH USE ONLY

December 13, 2016