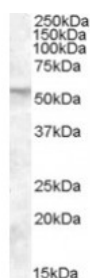




## FKBP4 Antibody

CATALOG NUMBER: 46-782



Western blot analysis of FKBP4 in human placenta lysate (35 ug protein in RIPA buffer) using FKBP4 Antibody at 0.01 ug/mL.

### Specifications

<b>SPECIES REACTIVITY:</b>	Human
<b>TESTED APPLICATIONS:</b>	ELISA, WB
<b>APPLICATIONS:</b>	ELISA: Antibody detection limit dilution 1:8,000. Western Blot: Approximately 52 kDa band observed in human placenta lysates (calculated MW of 51.8 kDa according to NP_002005.1). Recommended concentration: 0.01-0.03 ug/mL.
<b>POSITIVE CONTROL:</b>	1) Cat. No. 1309 - Human Placenta Lysate
<b>IMMUNOGEN:</b>	FKBP4 antibody was raised against a 15 amino acid synthetic peptide near the C-Terminus of FKBP4.
<b>HOST SPECIES:</b>	Goat

### Properties

<b>PURIFICATION:</b>	FKBP4 antibody was purified from goat serum by ammonium sulphate precipitation followed by antigen affinity chromatography using the immunizing peptide.
<b>PHYSICAL STATE:</b>	Liquid
<b>BUFFER:</b>	FKBP4 antibody is supplied in Tris saline, 0.02% sodium azide, pH 7.3 with 0.5% bovine serum albumin.
<b>CONCENTRATION:</b>	500 ug/mL
<b>STORAGE CONDITIONS:</b>	Aliquot and store at -20°C. Minimize freezing and thawing.
<b>CLONALITY:</b>	Polyclonal
<b>CONJUGATE:</b>	Unconjugated

### Additional Info

<b>ALTERNATE NAMES:</b>	FKBP4, FK506 binding protein 4, 59 kDa, FKBP52, FKBP59, HBI, Hsp56, PPIase, p52, FK506 binding protein 4 (59kD), FK506-binding protein 4, FK506-binding protein 4 (59kD), HSP binding immunophilin, T-cell FK506-binding protein, 59kD, p59 protein, peptidylpro
<b>ACCESSION NO.:</b>	NP_002005.1
<b>PROTEIN GI NO.:</b>	4503729
<b>OFFICIAL SYMBOL:</b>	FKBP4

---

**GENE ID:** 2288

---

## Background

**REFERENCES:** 1) Ruan B, Pong K, Jow F, Bowlby M, Crozier RA, Liu D, Liang S, Chen Y, Mercado ML, Feng X, Bennett F, von Schack D, McDonald L, Zaleska MM, Wood A, Reinhart PH, Magolda RL, Skotnicki J, Pangalos MN, Koehn FE, Carter GT, Abou-Gharbia M, Graziani EI. Binding of rapamycin analogs to calcium channels and FKBP52 contributes to their neuroprotective activities. *Proc. Natl. Acad. Sci. U.S.A.* 2008 Jan 105 (1): 33-8.

---

**FOR RESEARCH USE ONLY**

December 13, 2016