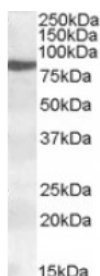




ALOX15 Antibody

CATALOG NUMBER: 46-769



Western blot analysis of ALOX15 in HeLa lysate (35 ug protein in RIPA buffer) using ALOX15 Antibody at 1 ug/mL.

Specifications

SPECIES REACTIVITY:	Human
TESTED APPLICATIONS:	ELISA, WB
APPLICATIONS:	ELISA: Antibody detection limit dilution 1:32,000. Western Blot: Approximately 80 kDa band observed in nuclear HeLa lysate (calculated MW of 74.8 kDa according to NP_001131.3). Recommended concentration: 0.2-0.5 ug/mL.
POSITIVE CONTROL:	1) Cat. No. 1201 - HeLa Cell Lysate
IMMUNOGEN:	ALOX15 antibody was raised against a 13 amino acid synthetic peptide near the internal region of ALOX15.
HOST SPECIES:	Goat

Properties

PURIFICATION:	ALOX15 antibody was purified from goat serum by ammonium sulphate precipitation followed by antigen affinity chromatography using the immunizing peptide.
PHYSICAL STATE:	Liquid
BUFFER:	ALOX15 antibody is supplied in Tris saline, 0.02% sodium azide, pH 7.3 with 0.5% bovine serum albumin.
CONCENTRATION:	500 ug/mL
STORAGE CONDITIONS:	Aliquot and store at -20°C. Minimize freezing and thawing.
CLONALITY:	Polyclonal
CONJUGATE:	Unconjugated

Additional Info

ALTERNATE NAMES:	ALOX15, arachidonate 15-lipoxygenase, 15-LOX-1, 15-LOX2, LOG15
ACCESSION NO.:	NP_001131.3
PROTEIN GI NO.:	40316937
OFFICIAL SYMBOL:	ALOX15
GENE ID:	246

Background

REFERENCES: 1) McDuffie M, Maybee NA, Keller SR, Stevens BK, Garmey JC, Morris MA, Kropf E, Rival C, Ma K, Carter JD, Tersey SA, Nunemaker CS, Nadler JL. Nonobese diabetic (NOD) mice congenic for a targeted deletion of 12/15-lipoxygenase are protected from autoimmune diabetes. *Diabetes*. 2008 Jan;57(1):199-208. Epub 2007 Oct 16.

FOR RESEARCH USE ONLY

December 13, 2016