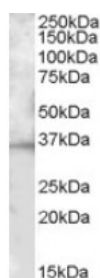




BTLA Antibody

CATALOG NUMBER: 46-766



Western blot analysis of BTLA in human placenta lysate (35 ug protein in RIPA buffer) using BTLA Antibody at 0.03 ug/mL.

Specifications

SPECIES REACTIVITY:	Mouse
TESTED APPLICATIONS:	ELISA, WB
APPLICATIONS:	ELISA: Antibody detection limit dilution 1:4,000. Western Blot: Approximately 35 kDa band observed in mouse spleen lysates (calculated MW of 32.8 kDa according to human NP_861445.3 and of 34.2 kDa according to mouse NP_001032808.2). Recommended concentration: 1-3 ug/mL.
POSITIVE CONTROL:	1) Cat. No. 1309 - Human Placenta Lysate
SPECIFICITY:	This antibody is expected to recognize both reported isoforms (NP_861445.3; NP_001078826.1).
IMMUNOGEN:	BTLA antibody was raised against a 14 amino acid synthetic peptide near the C-Terminus of BTLA.
HOST SPECIES:	Goat

Properties

PURIFICATION:	BTLA antibody was purified from goat serum by ammonium sulphate precipitation followed by antigen affinity chromatography using the immunizing peptide.
PHYSICAL STATE:	Liquid
BUFFER:	BTLA antibody is supplied in Tris saline, 0.02% sodium azide, pH 7.3 with 0.5% bovine serum albumin.
CONCENTRATION:	500 ug/mL
STORAGE CONDITIONS:	Aliquot and store at -20°C. Minimize freezing and thawing.
CLONALITY:	Polyclonal
CONJUGATE:	Unconjugated

Additional Info

ALTERNATE NAMES:	BTLA, B and T lymphocyte associated, BTLA1, CD272, FLJ16065, MGC129743, B and T lymphocyte attenuator
ACCESSION NO.:	NP_861445.3, NP_001078826.1
PROTEIN GI NO.:	145580621
OFFICIAL SYMBOL:	BTLA
GENE ID:	151888

Background

REFERENCES: 1) Lasaro MO, Tatsis N, Hensley SE, Whitbeck JC, Lin SW, Rux JJ, Wherry EJ, Cohen GH, Eisenberg RJ, Ertl HC. Targeting of antigen to the herpesvirus entry mediator augments primary adaptive immune responses. Nat Med. 2008 Feb;14(2):205-12. Epub 2008 Jan 13.

FOR RESEARCH USE ONLY

December 13, 2016